



**NEW ZEALAND  
SHEEPBREEDERS' ASSOCIATION  
SUFFOLK NZ  
OCTOBER 2017**

Greetings Again Suffolk Members,

OMG... The Weather, The Weather, The Weather... ABSOLUTELY AWFUL... I hope that you have all had a stress-free lambing & were all able to keep your new-born lambs nice & warm behind a hedge somewhere... Alas, not all of us have that luxury. Roll on Spring & Summer is all I can say.

Yes..... ☺ The lamb schedule has finally risen to something decent. That will put a few extra \$\$\$ into the pockets of you farmers who held onto your late/smaller lambs to fatten. The outlook for Prime Lamb \$\$\$wise is looking pretty positive. I have heard of a farmer receiving \$8 kg for his shipment of lambs 2 weeks ago when the works were desperate to fill an order & another last week with early born 24Kg Suffolk lambs gleaming \$179 at the works!! Ewe schedules are also looking VERY attractive, so If you have any old girls that aren't in lamb, MARKET THEM NOW & make way for your new babies.... I guess some of you are shearing, preening & appraising your sheep for the upcoming shows which aren't very far away now. Such a hectic time of the year with docking, weaning, weighing & drenching your lambs & making hay while the sun shines. Don't forget the dates are confirmed for next year's National Tour in Canterbury. Book your fares now on Grabaseat while they are cheap. A message to all new breeders - a Tour is the best way to meet fellow breeders, network with one another, check out some terrific sheep & get some well proven ideas on how to do anything Suffolk. As always, I am looking forward to my sojourn in the South, hope to catch you at the Canterbury Show & the Canty Sale. **Debbie**

**BREED COMMITTEE NEWS:**

**CHAIRMAN'S REPORT:**



It is with pleasure that I present the Suffolk NZ 2016-17 Chairman's report. I was voted in as Chairman at the AGM held in Dunedin held in conjunction with the National Tour.

The tour was very well organised by Simon Howard, Simone Budge, & the Southern Breeders Club. We had a great look around the Otago region, where we saw some very good Suffolk's as well as interesting activities. Curling at Naseby, the Taieri Gorge Train, Totara Estate and finished with a Super Rugby game between the Highlanders and Crusaders (a pity about the score!).

At the annual dinner, Colin Irwin was made a life member of Suffolk NZ in recognition of his services to the Suffolk breed. At the Canterbury Show Suffolk's again excelled. The Open Suffolk ram hogget was won by Stuart Sinclair's exhibit which then went on to win the Frank O'Reilly cup for Supreme Meat Sheep of the Show. Stuart also won the Miss Canterbury Ewe Hogget. Simon Howard won the Super Ewe and three Suffolk rams won the Trifecta class. Also at the show we presented John Miles with a Suffolk NZ Life Member badge in recognition for the way he has promoted the Suffolk Breed. Simone Budge was the 2017 Suffolk Ambassador of the Year for the work she did organising the National Tour and Conference.

Stud Ram Fairs.

Canterbury - Top Price \$6500 Eric Ross, \$5000 Simon Howard.

Feilding - \$4000 Norm and Margaret Carr.

Gore - was the highlight of the stud ram sales, with \$10,500 gained by Anton Gibson's Dry Creek 2/15 & Ross & Tracey McCall's Mt Annan 639/15 selling for \$9000.

Most breeders appear to have had a total clearance of Suffolk rams. This is a great result as there are less commercial ewes out there, we are increasing our market share.

The lamb schedule has just got stronger as the season has progressed. I hope this is not just because of the lack of supply of lamb, and is to do with the markets being willing to pay more for our lamb.

The outlook for lamb is promising as new markets open up – chilled lamb to China, Frozen lamb into Iran to name a few.

I would like to acknowledge the great work Stewart Morton has done with our annual advertising campaign, which is always eye catching and draws attention to our breed, Debbie Holmes for her very informative newsletters and the rest of our committee.

A special thank you to Greg, Anne and Lyndsay in the Sheepbreeders office.

On a personal note, on 20 March 2017, my father Peter Hampton passed away. His involvement with the Suffolk breed started in 1970 when he imported 6 Suffolk ewes from Australia, which was the beginning of the Waterton Suffolk Stud of today. Thank you to all those who sent cards and messages and to those who attended Peter's funeral. Peter will be sadly missed.

If anyone has anything they would like to discuss, please don't hesitate to contact me. (03 6143330)

**Chris Hampton, Chairman, SUFFOLKNZ**

## **COMMITTEE NEWS:**

The Breed Committee met via a video conference at the BNZ Business centres on 4<sup>th</sup> August 2017.

Chairman, Chris Hampton opened the meeting. All members present stood for a minute's silence as a sign of respect for Peter Hampton, Life Member, who had passed away recently. Symon Howard said on behalf of SUFFOLKNZ, members extend their condolences to Chairman Chris Hampton & his family.

## **CHAIRMAN & VICE-CHAIRMAN**

Chris Hampton, was re-elected as Chairman & Symon Howard was re-elected as Vice-Chairman.

Stewart Morton is to continue in his role as National advertising coordinator, Rob Tennent as CPT coordinator & Debbie Holmes as compiler of the Newsletter.

## **FINANCIAL STATEMENT**

The Suffolk NZ Statement of Revenue & Expenditure as at 31/03/2017 showed a Credit Balance for the year totalling \$21104.95 for the year, as compared to the previous year's Credit Balance totalling \$36291.00.

As our financial year reflects actuals, what is received and what is paid within our financial year, the 2016 balance actually included \$14000.00 (Conference-2016) in revenue that was repaid in our 2017 Financial year. Therefore, the true balance for 2016 would have been closer to \$22000.00. Which makes the balances of 2016 and 2017 now very comparable.

Remembering our financial year reflects what comes into our account and what goes out between the first of April and the 31<sup>st</sup> March.

The Breed Committee wants to be transparent and is only too willing to circulate its Financial Statement every year, and encourages any member who has any queries to contact Greg at the office.

## **RAM FAIR SPIDER TESTING REQUIREMENTS**

It is no longer compulsory to test rams for Spider, so It is not an entry requirement of any NZ Stud Ram Fair anymore. The purchaser has the right to have untested rams DNA tested for Spider within 3 months of the sale ( at the purchasers expense). If there is a positive test, then the sale becomes null & void.

## **NATIONAL ADVERTISING**

Clubs will again be allocated \$30 per member & \$10 per member going to a National advertising programme. Last year \$3680 was spent on Advertising.

## **RAM SALE DATABASE**

This has been very successful & is to continue.

## **WELCOME TO NEW FLOCKS:**

Flk. 1024 'BMN' Anna Tarver, Ashburton

Flk. 1025 'Bardell' Rose Bardin & Alby Rendell, Waihi

Flk. 1026 'Wynyard' Keri & Matt Taylor, Te Awamutu

## **CPT TRIAL / SIL ACROSS FLOCK**

As it was my first year as coordinator, it has been a learning year & I have been liaising with Julia Aspinall re Across Flock data. At the BCM it was agreed that the April report was the most important & hard copies of reports were not required by most members as they are on email. I will be liaising with Across Flock members at the Canterbury Ram Fair.

CPT. Suffolk NZ applied to B+LNZ Genetics to have 2 rams entered into the CPT trial this year. This was accepted & we had one from the north & south entered. The two rams representing Suffolk NZ are Taronga 41/15 & Tyanee 22/15. Semen was collected and these rams AI ewes at the Managarata (Taratahi), & the Invermay (Ag research) hub sites.

This year we have also had two Suffolk rams entered in the Maraetotora Next Generation site (Horizon Farming) in Hawkes Bay. Tyanee Stud entered two rams into the site, Tyanee 18/15 & Tyanee 28/15. For further info check out BEEF+LAMB link below.

<http://www.blznzgenetics.com/news/media-releases/sheep-central-progeny-test-extends-to-co>

*Rob Tennent*

## **CORRESPONDENCE:**

It has been brought to the attention of SUFFOLKNZ that there was a Suffolk Ram entered in the Gore Ram Fair with an unregistered pedigree.

Pure bred unregistered Suffolk's are able to be registered only if they have met the rules for the Category 3 Appendix and if a descendant of Texel must also be DNA tested clear of microphthalmia and % of Suffolk must be stated.

SUFFOLKNZ will sponsor the scanning of rams at the Canterbury Show as it is not only NSISBC members who exhibit there & it is the biggest lineup of Suffolk,s in the country.

## **PROMOTIONAL & BREED LEVY**

Promotional levy is to remain at:

0-50 ewes \$30 + gst

51-100 ewes \$60 + gst

100 ewes + \$80 + gst

At present the Breed levy remains the same: \$25 per flock & 30 cents per ewe. A decision regarding the levy will be at the Canterbury Ram Fair BCM.

## **NZ SHEEPBREEDERS ASSN COUNCIL**

Now, all new flocks, other than those transferred to family members, must go to the back of their breed sections in the Flock Book.

The NZ Sheepbreeders Assn is celebrating 125 years in 2019 and it was suggested that the World Merino Conference, the World Sheep and Wool Congress and the NZ Sheepbreeders Assn could hold a joint Conference.

*Greg Burgess, General Manager, NZSBA*

## OBITUARY:

### PETER HAMPTON, WATERTON STUD. Fik 216



In March this year the Suffolk Breed lost a passionate and enthusiastic breeder of Suffolk sheep.

Peter John Hampton 11/10/1944 – 20/03/2017 was one of those people who was not only free with his knowledge, but encouraged young and old to breed top sheep, which he did on a regular basis.

Peter started the Waterton Suffolk Stud in 1971, mainly on the Maori Hill bloodlines, a well-known stud to all Suffolk breeders.

Peter was always an advocate for finding ways to improve the Breed, through ram trials etc. He was one of those people who lead from the front.

He always greeted you with a broad smile and a firm handshake, had a great sense of fun and humour and would never say no to a beer and a chat.

Peter's happy face was never lost despite his state of health. He will be sorely missed by the Suffolk Breed and the Sheep Industry in general.

Our thoughts go out to his family, wife Ngaire, sons Chris, Andrew, Tim and daughter Grace, partners and six grandchildren. He was a staunch family man.

The Waterton Suffolk Stud is in the very capable hands of son Chris, a chip off the old block.

RIP Peter.

*Hamish Gardiner*



## NATIONAL RAM FAIRS



### CANTERBURY RAM & EWE FAIR

**Friday,  
1<sup>ST</sup> December 2017  
12 NOON**

**\*\*\*ALL BREEDERS\*\*\***

**The Suffolk section will be sold  
after lunch.**

**Breed Committee meet at 4pm straight  
after the sale at Yaldhurst Tavern.**

**A social get together - Drinks & Dinner,  
will then be held at approximately 5pm  
after the meeting.**

**For more details, contact Norm Carr  
03)3036134 / 0274701068**



### FEILDING RAM & EWE FAIR



**Tuesday,  
12<sup>th</sup> December 2017**



### GORE RAM FAIR



**Wednesday,  
17<sup>th</sup> January 2018**



### UPCOMING SHOWS



#### WAIKATO

**27<sup>th</sup>-29<sup>th</sup> October 2017  
Show Secretary: 078554776**

#### CHRISTCHURCH

**15<sup>th</sup> - 17<sup>th</sup> November 2017  
Show Secretary: 033433033**



**2018**



## **NATIONAL SUFFOLK TOUR**

**The National Suffolk Tour will be held in the North & Central Canterbury area on 15<sup>th</sup>, 16<sup>th</sup>, 17<sup>th</sup> & 18<sup>th</sup> May 2018.**

**The tour will start on Wed. 16<sup>th</sup> May with the bus leaving the hotel at 7.45am.**

**We will be staying in Christchurch on Tuesday & Wednesday nights & in Hanmer on Thursday night.**

**We will be returning back to Christchurch at 4pm on Friday 18<sup>th</sup>.**

**An interesting & varied programme is underway & further details will be sent out at a later date.**

**The Northern (S.I.) Suffolk Breeders look forward to seeing you all in Canterbury in 2018.**

*Annette Millar, Secretary  
Northern (S.I.) Suffolk Breeders Club*

### **SUFFOLKS... CANADIAN STYLE**

While visiting Canada in June, Brian & I had the pleasure of visiting 3 Suffolk breeders in Nova Scotia & Prince Edward Island. We totally enjoyed seeing how sheep are farmed in the cooler Northern regions, where temperatures can plummet to -40°, and our Canadian hosts were all very interested in how we rear our sheep in NZ. Equally, we were keen to find out how they raised theirs. The sheep we viewed were nearly all of British ancestry, but appeared to be not quite as short as the British types. They definitely have the British head shape though, with a different ear setting & more length to the ears than what we are used to.

Their major challenge was the necessity to house their sheep over winter while the snow is on the ground. The ewes are housed in a barn for the winter months, with hay being added every day for food & bedding. Grain is also fed of course. When the ewes have lambed and the lambs are big enough, they are trained to eat grain as well & wander freely to help

**Cont.** themselves through a small gate in the wall that the ewes can't get through. The lambs can spend up to 8 months in the barn. All stock appeared to be in good health despite being locked up in the barn for such a long time. The 3 breeders had all used AI semen from UK, to a varying degree of success.

George & Melaney Matheson, Prince Edward Island are what we would call lifestyle farmers & had a cottage industry operating from their home. They processed & packaged homegrown lamb and tanned skins for sale in their farm shop and at their local farmers market in Charlottetown, PEI. They also sold other produce from their farm which helped offset the cost of purchasing grain for their sheep. Their Suffolk's were mainly Canadian bred of British origin.

John MacDonell, Enfield, Nova Scotia

John & his wife had just recently retired and were living on a part of his grandfather's farm in a log cabin that he'd helped build with logs & timber milled off their property. Being a Minister of Agriculture in a previous government before retirement, John was extremely interesting regarding sheep importation & agricultural systems in Canada. We learned all about the area that they lived in as well as all about his Suffolk's. Both were very keen outdoors people ie. Hunting & gardening. AI had been used to improve his flock and of course was of all British origin.

Bill & Joan McNeil, Windsor, Nova Scotia

Suffolk's were a sideline to their families very successful Horse Stud. Bill & Joan were helped by their daughter & son in law on the farm & had the largest flock of Suffolk's that we viewed. Bill gave us an extended tour around his farm & district, gave us very interesting history of the area & talked passionately about his sheep. He definitely was a 'figures' man & he used AI extensively with all semen coming from UK. A vet was employed from the other side of Canada to do the inseminations, so major expenses were incurred, both in travel & purchase of semen doing the AI. Bill's goal was trying to breed all ARR/ARR sheep. Eastern Canadian farming challenges are Snow, Coyotes Barbers Pole Worm & Ticks that carry Lyme Disease. We were warned at one property to check our shoes & legs for Ticks, as Lyme disease can make humans extremely ill. We had a wonderful time discussing Suffolk sheep in general, taking in the scenery & visiting these very hospitable breeders. Many thanks go to the Matheson's, MacDonnell's & McNeil's for the wonderful hospitality that we received.

Many thanks also go to Cathy Gallivan, Editor of 'Sheep' Canada Magazine & Stacey White, Canadian Sheep Breeders' Assn. for helping us make contact with these Breeders.

*Debbie Holmes*



# LAMB, RISONI & OLIVE BAKE

NEW IDEA MAGIC MINCE

Serves 4

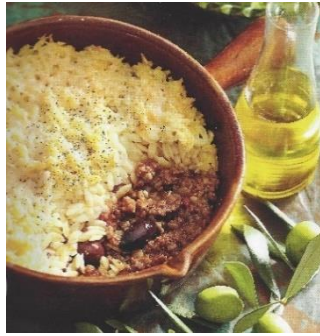
## Ingredients

- 1 Cup Risoni
- 1 TBSP Olive Oil
- 1 Onion, finely chopped
- 2 cloves Garlic, crushed
- 2 Tsp. Cinnamon
- 500 gm Lamb Mince
- 410 gm tin chopped Tomatoes with Basil & Garlic
- 200 gm jar pitted Kalamata Olives, drained & chopped
- ¼ Cup Tomato Paste
- 2 Tsp dried Oregano leaves
- Salt & Pepper to taste
- 1 Egg, lightly beaten
- 1 Cup finely grated Parmesan

## Method

1. Cook Risoni in a large saucepan of boiling, salted water until tender. Drain.
2. Meanwhile, heat oil in a large, deep frying pan. Add Onion, Garlic. Cook, stirring for 1 minute. Add mince. Cook, stirring for about 3 minutes, or until browned.
3. Add Tomatoes, Olives, Paste & Oregano. Season with Salt & Pepper. Bring to boil. Simmer, stirring occasionally, for about 10 minutes, or until slightly thickened.
4. Pour mixture into lightly greased 12-cup capacity ovenproof dish. Combine Risoni, Egg & half the Parmesan in a bowl. Spread over the top, Sprinkle with the remaining Parmesan.
5. Cook in a hot oven (200°C) for about 20-25 minutes, or until golden brown.

*TIP: You can replace Risoni with other varieties of Pasta such as Penne or Bow-Tie. Cooking time may vary.*



## CANADIAN SUFFOLKS



George & Melany Matheson



John MacDonell



John MacDonell

Bill & Joan McNeil



Bill & Joan McNeil

For any information required from NZSBA, Greg Burgess & his team are always ready to help at [greg@nzsheep.co.nz](mailto:greg@nzsheep.co.nz)  
Phone 03) 3589412.



ROYAL  
WELSH  
SHOW  
2017



*Look good at Kaiteretere beach?*

Its  
Showtime  
Again...



CHCH 2016



Don't forget you can download forms at the NZSBA website  
[www.nzsheep.co.nz](http://www.nzsheep.co.nz)



*This Newsletter is only as good as EWE make it...*

*If you have any other topics that you wish to discuss, News Updates or anything interesting pertaining to the Suffolk Breed in general, please send direct to me at email:*

[studholmesuffolks@xtra.co.nz](mailto:studholmesuffolks@xtra.co.nz)

or

Debbie Holmes ☺,

459b. Karioitahi Road, RD3, Waiuku, 2683



**SUFFOLK NZ**  
**FINANCIAL STATEMENT**  
**STATEMENT OF REVENUE & EXPENDITURE AS AT 31/03/2017**

		REVENUE				EXPENDITURE
BALANCE 31/03/2016		36291.00				
				PROMOTIONAL GRANTS		
BREED LEVIES		4600.00		NORTHERN S I CLUB	960.00	
				NORTHERN CLUB	570.00	
PROMOTIONAL LEVIES		3273.60				1530.00
ACROSS FLOCK		760.05		PROMOTION - NZX AGRI		3680.00
CHCH SHOW - SCANNING		255.00		ACROSS FLOCK		860.00
CONFERENCE - 2016		5525.23		TRAVELLING		1176.95
				CHCH SHOW-SCANNING		255.00
				CONFERENCE - 2016		19187.83
				MEETING		382.87
				GENERAL		168.7
				LIFE MEMBERSHIP BADGES		182.58
				XCELL		656.00
						28079.93
				BREED PHOTO/POSTAGE	1450.00	
				WEBSITE HOSTING	70.00	
						1520.00
						29599.93
				CREDIT BALANCE		21104.95
		50704.88				50704.88

PLEASE PERUSE THE ACCOUNTS AND CONTACT THE OFFICE FOR ANY CLARIFICATION PRIOR TO THE MEETING