

‘ADELONG’

SHEEP GENETICS

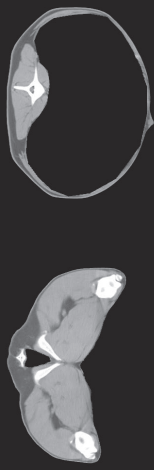
A/c Neville and Dianne Greenwood, Ellesmere

13th ANNUAL RAM PRODUCTION SALE ON FARM

Wednesday 6th December 2017 at 2.00pm



Lincoln CT



Use the latest
technology to
identify your
top sheep

To find out more, contact
Chris Logan
P: 03 423 0670 | M: 027 604 8450



**Lincoln
University**
Te Whare Wānaka o Aoraki
AOTEAROA • NEW ZEALAND

New Zealand's specialist land-based university

‘ADELONG’

SHEEP GENETICS

Quality you can see – Performance you can trust.

A/C Neville and Dianne Greenwood, Ellesmere.

110 Poll Dorset one shear rams, 14 Texel x Poll Dorset one shear rams, 12 Suffolk x Texel x
Poll Dorset one shear rams

Inspection: Rams available from 11 am on sale day

A 6% rebate commission will be paid to outside purchasing companies

Catalogues available from the following:

Neville Greenwood 03 3295799 or 0274311431

Stewart Uren “PGG Wrightson” 0275910446

Ryan Shannon “PGG Wrightson” 0275650979

Callum Dunnett “Carrfields Livestock” 0275870131

NEW & USED Farm machinery

PARTS • SALES • SERVICE



**For the best brands and
the best service call us today**

Leeston 03 324 3791
Ashburton 03 307 8027
Amberley 03 314 9055
Timaru 03 688 2179

www.cochranes.net.nz

CASE IH
AGRICULTURE

COCHRANES
your farm machinery specialist

FOREWORD

Dianne and I have pleasure in presenting our rams for our 13th annual on farm sale.

The Poll Dorset flock was established in 1970 and since that time we have strived to breed sheep that are tough, structurally sound, true to breed type, with good constitution and performance figures (growth, muscle, fat and fertility) giving them the ability to shift and thrive wherever they are used, in New Zealand and around the world.

We continue to use DNA testing to identify sires with good foot scores. After identifying some ewes with 1-1 foot scores and using them for embryo transfer we now have a nucleus of 1-1 ewes in the flock. Although not all the rams are DNA tested, there are 25 rams in the catalogue with foot scores between 1-1 and 1-3.

The 550 Poll Dorset ewes in the flock are fully recorded with SIL and the rams are muscle scanned by Peter Clulee of Otago Ultra Sound. A selected group are put through the CT scanner at Lincoln University to help identify the highest meat yielders.

All rams in our sale have been veterinary tested, vaccinated, dipped and have a new season Brucella Ovis accreditation.

Lambs were weaned on the 5th and 8th December 2016. The autumn weight and muscle scanning took place on the 30th April 2017

Stud rams

As in the past, stud rams previously sold at the Fielding and Christchurch stud fairs will be auctioned at our on farm sale. They are catalogued from lots 5 to 14 inclusive. They will be paraded on the concrete prior to the sale. Their pedigrees are in the pages prior to lot 1. Stud transfers will be available to any ram purchased over \$2000.

Acknowledgements

We would like to express our sincere thanks to the Reps from both companies for their help in the selection of the rams for cataloguing and their assistance in organising our ram sale.

Thanks also to Brian Brice from Hazlett Rural for his contribution towards the sale.

For many years Arthur Blakely from Pacific Basin Exports has selected live sheep for export to mainly South American Countries, we are grateful for Arthurs help over the years.

As many of you know, Eric Gordon Livestock, from Gisborne have supported our sale for many years. Although Eric has passed away, Neville Clarke has continued with his business and we thank Neville for his continued support.

Our thanks to Chris Logan from Flock-Linc (SIL Bureau) at Lincoln University for his work in loading all the pedigree, performance data and preparing the catalogue for print. To all the companies that have supported our catalogue with their advertisements, our sincere thanks.

Dianne and I thank you for your support in the past and look forward to catching up with you at this year's sale.

Neville

REFERENCE SIRES – POLL DORSET

Adelong 53/14 – foot score 1-3

Adelong 109/12 – foot score 2-3

Adelong 119/14 – foot score 3-3

Adelong 161/11 – foot score 3-3

Adelong 144/14 – foot score 1-3

Coastlands 40/10 – foot score 1-3

Adelong 161/14 – foot score 2-3

Brooklands 38/14 – foot score 3-3

Adelong 76/13 – foot score 2-5

Adelong 5/12 – foot score 1-1

Three sires were used in our AI programme **Windermere 49/13, Forrest View 99/12 and Shirlee Downs 57/13**

Windermere 49/13 is a moderate sized sire, very correct and has very good carcass traits.

Forrest View 99/12 is a powerful sire leaves good bone and constitution and has left lambs with very good growth rates.

Shirlee downs 57/13 is an Australian ram who has achieved well on Lambplan Australia.

Adelong 53/14 is by Manu 142/11

Adelong 119/14 is by Adelong 563/09

Adelong 144/14 is by Adelong 610/11

Adelong 161/14 is by Adelong 161/11

Two Ram Lambs were used, Adelong 34/15 his sire is Windermere 49/13 and Adelong 62/15 who is by Forest View 99/12

Adelong 161/11 is a son of Shirlee Downs 20/09, he is a moderate sized ram, very sound and yielded extremely well when we put a group of rams through the CT scanner at Lincoln University. He continues to produce rams with good muscle

Coastlands 40/10 was purchased from Cliff Derry who runs a flock of Poll Dorsets on the edge of the Waitamata Harbour. This ram is of moderate size, has a 1-3 foot score, is excellent on his feet and is a tough meaty sheep. He has bred well.

Texel x Poll Dorset

We continue to buy the best Texel rams we can find for this programme. All the rams used carry the MyoMax gene, are structurally sound and have good muscling.

Suffolk x Texel x Poll Dorset

As in the past we have used two very good Suffolk rams over what we have selected as the best Texel x Poll Dorset ewes.

TERMS AND CONDITIONS

The New Zealand Stock & Station Agent's Association Conditions of Sale and, to the extent deemed relevant by PGG Wrightson Limited (PGW), PGW's Terms of Sale apply to this sale. When proceeds are credited or a purchase is debited to a PGW monthly credit account, then PGW's Monthly Account Terms of Trade (as amended from time to time) apply to the extent deemed relevant by PGW. These terms can be inspected at the registration desk and on the wall in the auction room. The current versions of PGW's Terms of Sale and Monthly Account Terms of Trade are also available online at:

www.pggwrightson.co.nz/Our-Company/Terms-and-Conditions or in hardcopy on request.

All intending purchasers must register at the sales office prior to the sale.

PGW will pay a purchasing rebate of 6% of the purchase price excluding GST, plus GST, to livestock companies & recognised independent livestock agents with a PGW account who have introduced buyers to PGW before the sale and/or accompanied buyers to the sale.

PLEASE BRING THIS CATALOGUE TO THE SALE

LOCATION MAP IS ON THE BACK OF THE BUYER'S SLIP

Light refreshments will be available from 12 noon



www.mccarthycontracting.co.nz
Ph 03 329 6655 or 0274 848 564



A machine for all your
harvesting requirements



EXPLAINING SIL AND SHEEP SELECTION TOOLS

The SIL NZ Standard Terminal Worth Index (NZTW) focuses on key economic factors that influence farm income and costs – growth, survival and meat (carcass quality). SIL NZTW expresses (in cents per ewe lambing) differences in overall genetic merit between rams which are used in a prime lamb production system in which all progeny are slaughtered.

For example, if rams A and B from the same flock, with NZTWs of 600 and 700 respectively are mated to genetically similar ewes, ram B would be expected to produce progeny that on average return 50 cents ($700 - 600 / 2 = 50$) more than ram A per ewe mated. Assuming the two rams were mated to 300 ewes during their lifetime Ram B would be expected to generate \$150 (300×50 cents) more profit than Ram A.

Rankings are based on a combination of sub-indexes TSG (Terminal Sire Lamb Growth) TSM (Terminal Sire Meat yield) TSS (Terminal Sire Survival), which when combined together add up to the NZTW.

Breeding values (BV's) are an estimate of genetic merit for a single trait. They are measured in the units of the trait, e.g. weaning weight BV is measured in kgs. Number of lambs born BV is a measure of proportion of lambs born (proportion $\times 100 = \%$). Breeding values are calculated using information from the individual animal and its relatives, the deviation from the group average and the heritability of the particular trait.

WWT BV	Weaning weight breeding value in kg
NLB BV	Number of lambs born per ewe lambing Value in number of lambs born (proportion $\times 100 = \%$)
LW8 BV	Live weight at 8 months breeding value in Kgs
EMAcBV	Eye muscle area breeding value in square cm – adjusted for carcass weight
LEANYBV	Lean Yield Breeding value in Kgs Lean

Information in relation to the SIL performance data presented in this catalogue

The genetic analysis was run as a New Zealand Genetic Evaluation Across Flock Analysis incorporating 1174 flocks. 434 2016 born Rams were reported from this analysis for SIL flock 2905 'Adelong' Neville and Dianne Greenwood.

Using this analysis, the following SIL traits are presented: NZTW, NLBBV, WWTBV, LW8BV, EMAcBV and LEANYBV. Actual measurements for weaning and autumn/spring live weight and ultrasound data are also given.

The data presented in this catalogue was provided with the assistance of FLOCK-LINC an approved SIL bureau.

For further information, contact: Chris Logan, Lincoln University.

Phone: 03 4230670, Cell: 027 6048450 Email: Chris.Logan@lincoln.ac.nz

FLOCK-LINC

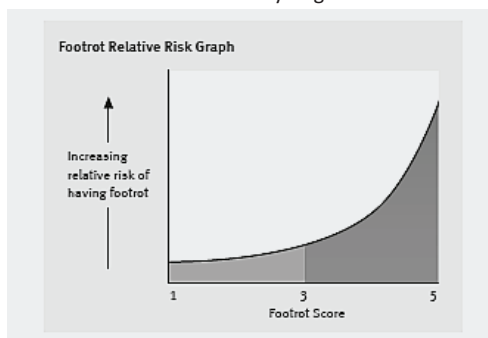
Performance Recording Service

FOOTROT GENE MARKER TEST

Blood samples collected from sheep can be “typed” to reveal which alleles of the DQA2 gene the sheep has. Sheep have two alleles, reflecting that they inherit one allele from each parent and thus can pass each allele on to their progeny in approximately a 50 : 50 ratio. The “flow” of alleles can thus be followed through extended pedigrees of sheep.

Rather than reveal the exact alleles sheep possess, the alleles have been codified into a ‘1’ (least likely to get footrot) to ‘5’ (most likely to get footrot) scale. The individual alleles are placed on this scale based on the “relative risk” of getting footrot. In our research, sheep with a ‘1’ or ‘2’ score are considered less likely to get footrot than average and sheep with a ‘4’ or ‘5’ score are considered more likely to get footrot than average. Sheep with a ‘3’ score are average (i.e. considered more likely to get footrot than those with a ‘1’ or ‘2’ and less likely to get footrot than those with a ‘4’ or a ‘5’ score).

The graph below shows how the footrot ratings correspond to the relative risk scale, with sheep scoring less than ‘3’ being considered fractionally less likely to get footrot, while those greater than ‘3’ are a number of times more likely to get footrot.



LEAST SUSCEPTIBLE

MOST SUSCEPTIBLE



It is recommended that if reducing footrot incidence is a breeding objective, then culling or corrective mating those animals with scores of 4 or 5 is desirable.

Want to find out more?

www.lincoln.ac.nz/gene-marker-lab
0508 FOOTROT (0508 366 8768 - within NZ)

New Zealand's specialist
land-based university



D. J. Webster Shearing

No mob too **big**

or small

Mobile Plant available



Ph: Diane or Kelvin Webster

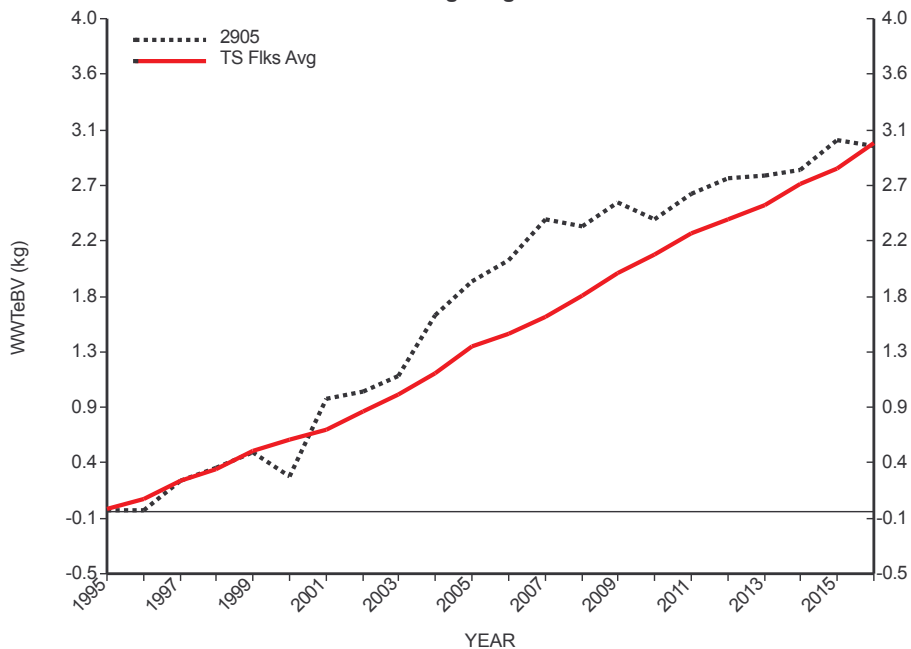
(03) 325 4283

Or 027 2311 725

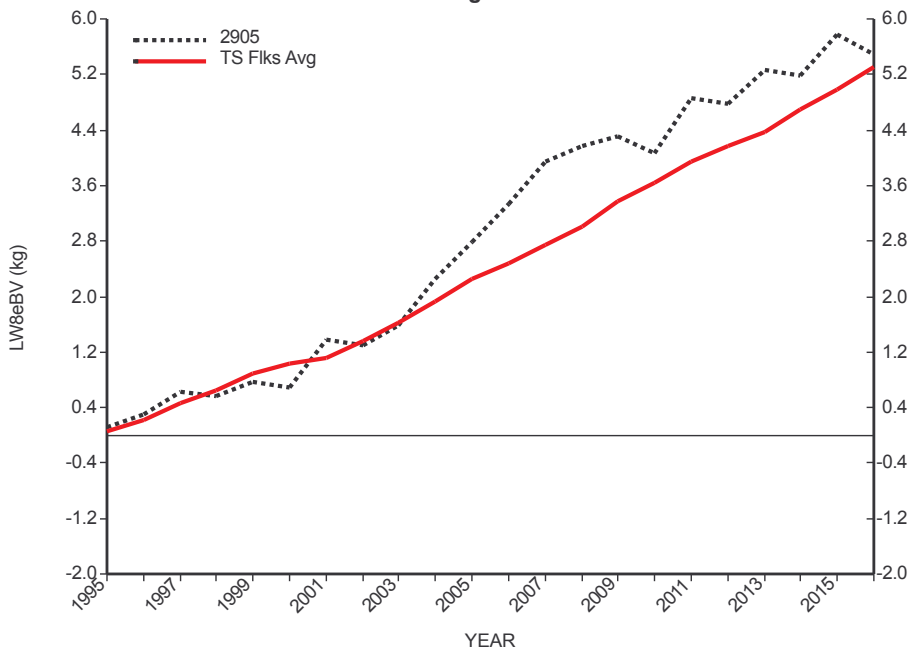
Proud to be associated with Neville and Dianne Greenwood



Weaning weight eBV

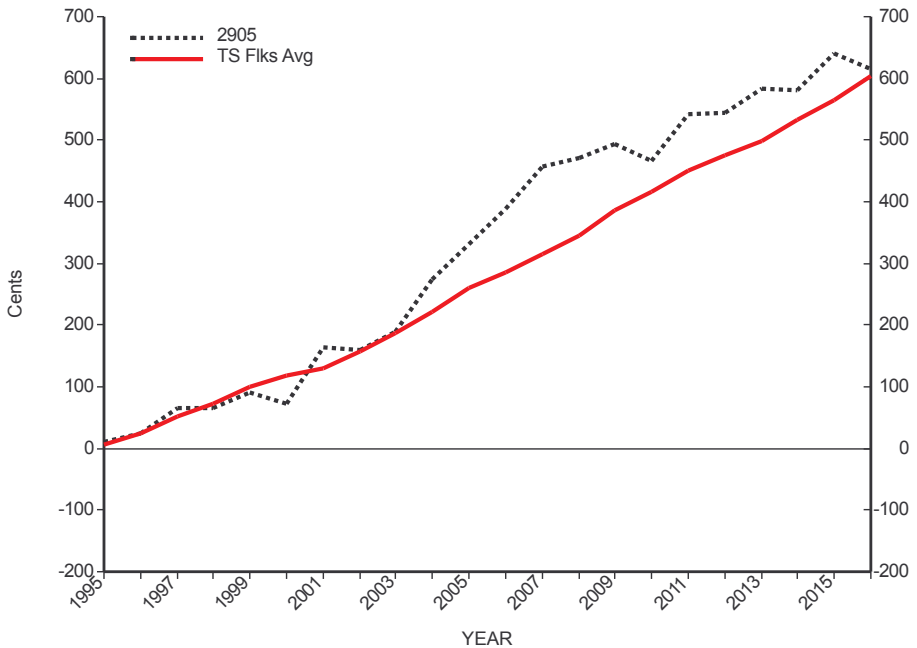


Live weight 8 eBV

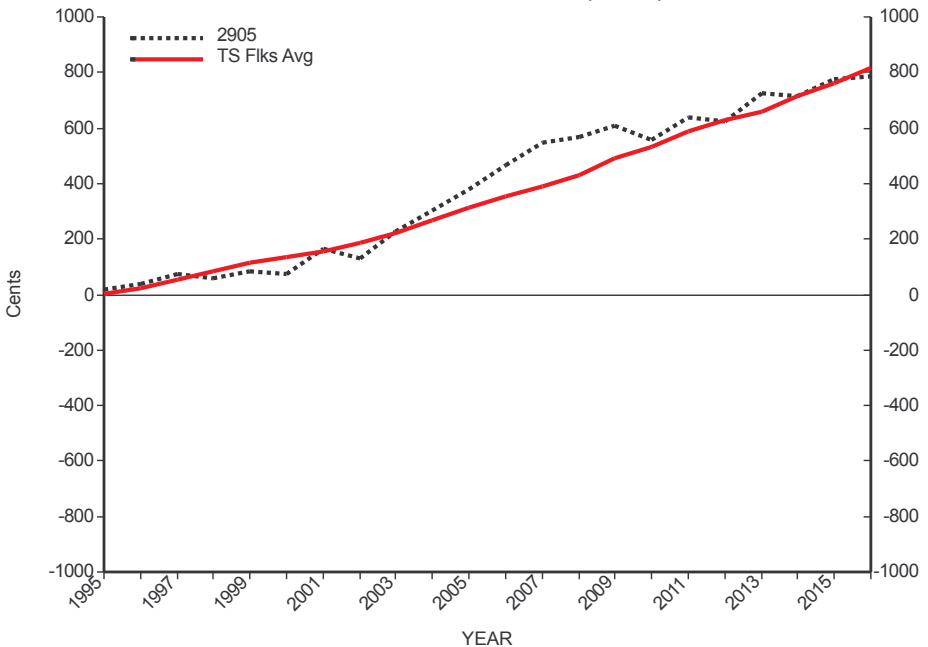




SIL Terminal Sire Lamb Growth



NZ Standard Terminal Worth (NZTW)





Pedigree Report

FLOCK-LINC
Performance Recording Service

Report Flocks	2905	Number of Rams	10
Flock Prefix	Adelong	Date Report Run	7-Nov-2017 14:59
Flock Owner	Greenwood N C & D M	Report No.	1623030
Report Sorted By	Poll Dorset	Report Birth Period	2016 to 2016
Report Sorted By	ZSORT		
Genetic Analysis No.	35147	Date Breeding Values Created	3-Nov-2017 19:00
Analysis Birth Period	1995 to 2017	Base Year	1995
Analysis Flocks	Too many Flocks to list (1174 Flocks in the analysis)		
Goal Trait Groups	Bare Points; Body Condition Score; CarLA; Dag Score; Facial Eczema; Fine Wool; Growth; Hgt Lambi		
Genetic Analysis Codes	Pregscan in Reproduction (if no NLB); Reproduction excludes LW8; Trait data excluded from GE; GBVs calculated		
Data Exclusion Set	Permanent		

List of birth flock numbers and prefixes for report animals, including sires and dams

50 Brooklands	269 Glenlake
1188 Windermere	2216 Coastlands
2895 Colinton	2937 Ohio
2968 Clifton	2971 Mallochvale
3383 Shirlee Downs	3590 Newbold
3981 Forest View	4219 Ashbank
4501 Cragbuie	4668 Huntingdon
4688 Puketotara	4730 Manu
7601 Hillcroft Farm	

DISCLAIMER: While all reasonable care has been taken to ensure the accuracy of information in this report, SIL expressly disclaims any and all liabilities that may arise from its use.



2016 Poll Dorset Ram Selection List

Across flock November

FLOCK-LINC
Performance Recording Service

Report Flocks	2905	Number of Rams	110
Flock Prefix	Adelong	Date Report Run	7-Nov-2017 11:22
Flock Owner	Greenwood N C & D M	Report No.	1622891
Flock Sire/Dam Breeds	Poll Dorset	Report Birth Period	2016 to 2016
Report Sorted By	Numeric Birth Tag		
Genetic Analysis No.	35147	Date Breeding Values Created	3-Nov-2017 19:00
Analysis Birth Period	1995 to 2017	Base Year	1995
Analysis Flocks	Too many Flocks to list (1174 Flocks in the analysis)		
Goal Trait Groups	Bare Points; Body Condition Score; CarLA; Dag Score; Facial Eczema; Fine Wool; Growth; Hgt Lambing; Meat Yield; Reproduc		
Genetic Analysis Codes	Pregscan in Reproduction (if no NLB); Reproduction excludes LW8; Trait data excluded from GE; GBVs calculated		
Data Exclusion Set	Permanent		



Explanation of Indexes

NZ Standard Terminal Worth
SIL Terminal Sire Lamb Growth
SIL Terminal Sire Meat Yield
SIL Terminal Sire Survival

(* NZTW) $\epsilon = (* TSG) + (* TSM) + (* TSS)$
 (* TSG) $\epsilon = 61 \times WWTgBV + 243 \times CWgBV$
 (* TSM) $\epsilon = 429 \times LNLYgBV - 126 \times FATYgBV + 301 \times HQLYgBV + 227 \times SHLYgBV$
 (* TSS) $\epsilon = 6066 \times SURgBV$

Explanation of Breeding Values

CWgBV = Carcass weight gBV
HQLYgBV = Hindquarter lean yield gBV
LW8gBV (lwbv) = Live weight 8 gBV
SURgBV = Lamb survival gBV

EMAcBV = Eye muscle area - cwt adj eBV
LEANyBV = Lean yield eBV
NLBeBV (nlbbv) = Number of lambs born eBV
WWTgBV (wwtbv) = Weaning weight eBV

FATYgBV = Fat yield gBV
LNLYgBV = Loin lean yield gBV
SHLYgBV = Shoulder lean yield gBV
WWTgBV = Weaning weight gBV

Explanation of Traits listed

WWT=Weaning weight
FDM=Fat depth measurement Ultra Sound

LW8=Live weight 8 months

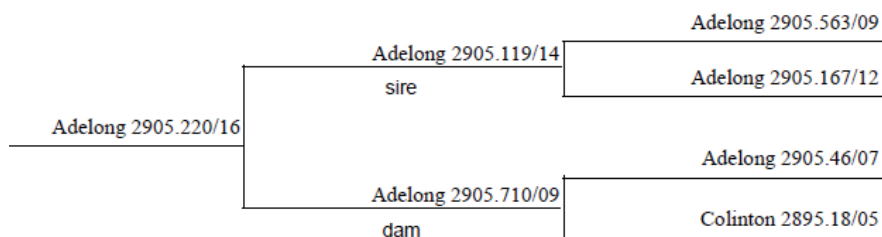
EMP=Eye muscle product Ultra Sound

List of birth flock numbers and prefixes for report animals, including sires and dams

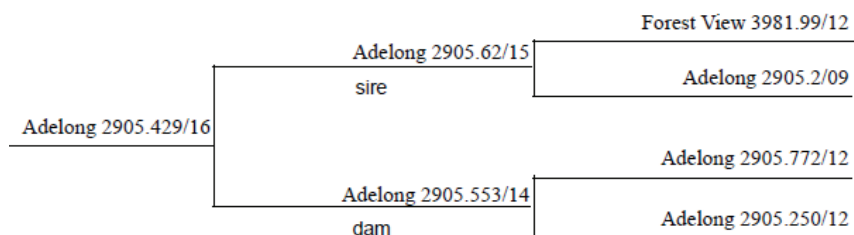
50 Brooklands	1188 Windermere	2216 Coastlands	3981 Forest View
---------------	-----------------	-----------------	------------------

DISCLAIMER: While all reasonable care has been taken to ensure the accuracy of information in this report, SIL expressly disclaims any and all liabilities that may arise from its use.

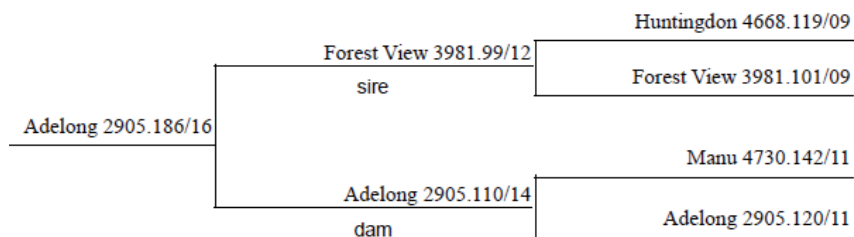
Pedigree for Adelong 2905.220/16



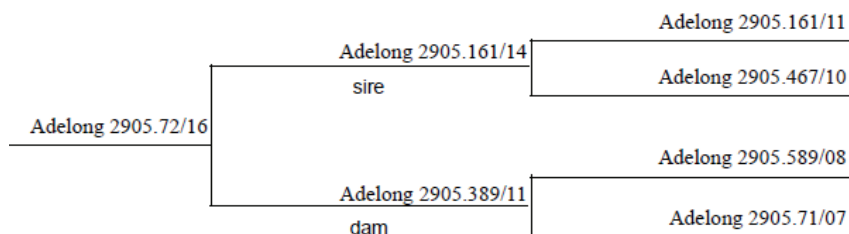
Pedigree for Adelong 2905.429/16



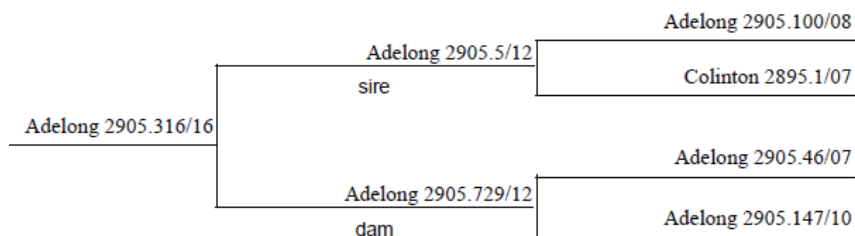
Pedigree for Adelong 2905.186/16



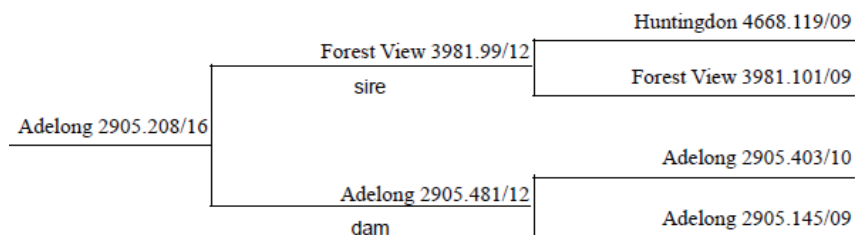
Pedigree for Adelong 2905.72/16



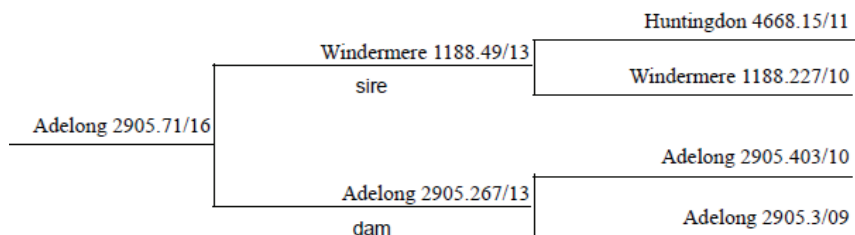
Pedigree for Adelong 2905.316/16



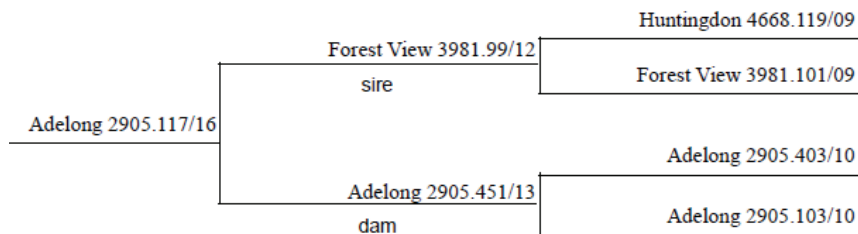
Pedigree for Adelong 2905.208/16



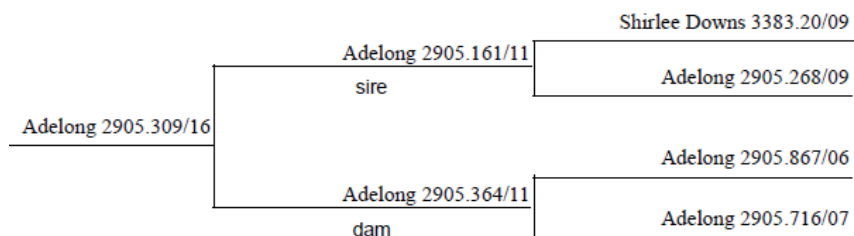
Pedigree for Adelong 2905.71/16



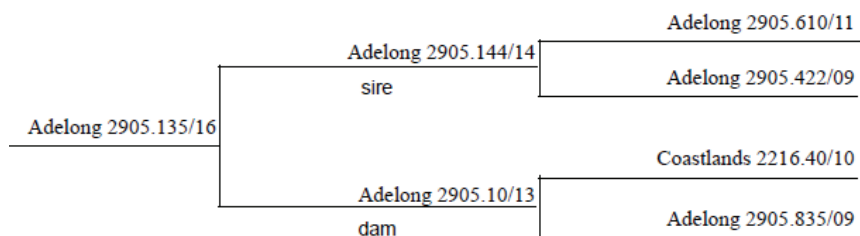
Pedigree for Adelong 2905.117/16



Pedigree for Adelong 2905.309/16



Pedigree for Adelong 2905.135/16

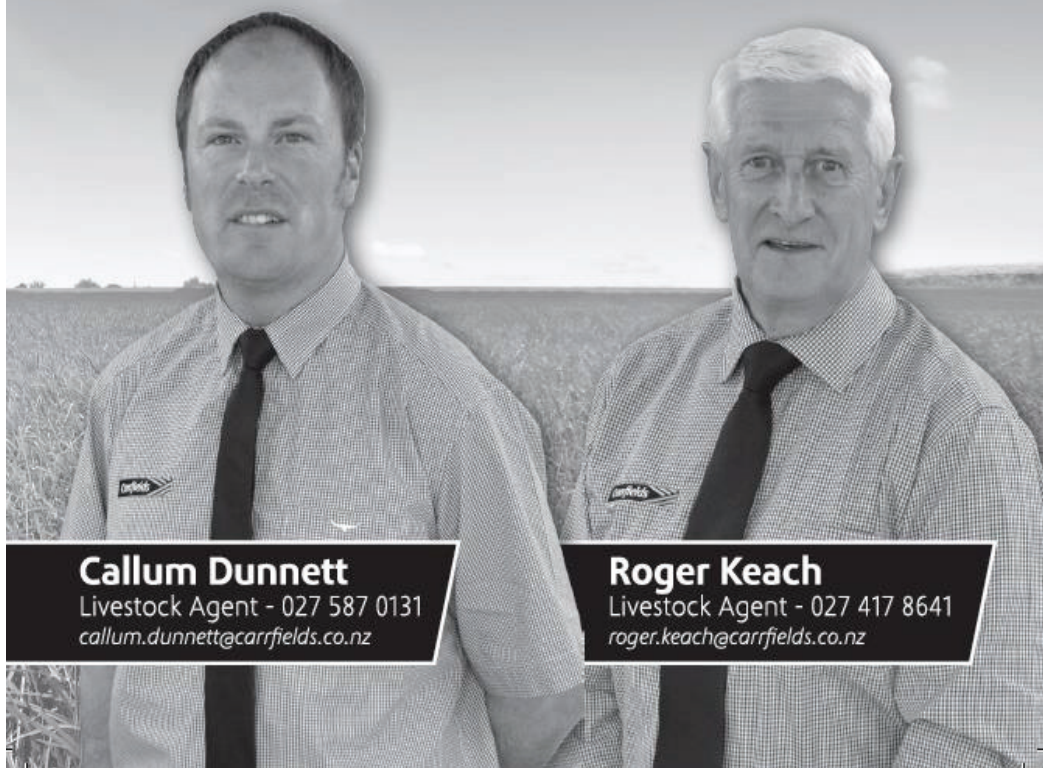




Carrfields

Livestock

WE HAVE YOUR STUD STOCK NEEDS COVERED



Callum Dunnett

Livestock Agent - 027 587 0131
callum.dunnett@carrfields.co.nz

Roger Keach

Livestock Agent - 027 417 8641
roger.keach@carrfields.co.nz

ADELONG POLL DORSETS

ADELONG POLL DORSETS**Date scanned: 30/4/17****LOT 1****34/16**

Adelong

Sire
161/14Dam
270/13**NZTW INDEX**
1038**RANK / 434**
15**SIL PERFORMANCE DATA****NLBBV**
0.000**WWT BV**
2.94**LW8 BV**
7.26**EMAcBV**
1.40**LEANYBV**
0.49**ACTUAL PERFORMANCE DATA****BR/RR**
2/2**Wean wt**
45**Autumn wt**
75**EMA**
27.1**Fat Depth**
5**Foot score****Purchaser****Price****LOT 2****465/16**

Adelong

Sire
62/15Dam
208/11**NZTW INDEX**
784**RANK / 434**
68**SIL PERFORMANCE DATA****NLBBV**
-0.029**WWT BV**
2.80**LW8 BV**
4.84**EMAcBV**
0.40**LEANYBV**
0.455**ACTUAL PERFORMANCE DATA****BR/RR**
1/1**Wean wt**
44**Autumn wt**
68**EMA**
20.2**Fat Depth**
3**Foot score****Purchaser****Price****LOT 3****39/16**

Windermere

Sire
49/13Dam
70/14**NZTW INDEX**
914**RANK / 434**
39**SIL PERFORMANCE DATA****NLBBV**
0.083**WWT BV**
3.81**LW8 BV**
6.90**EMAcBV**
1.96**LEANYBV**
0.123**ACTUAL PERFORMANCE DATA****BR/RR**
2/2**Wean wt**
42**Autumn wt**
62**EMA**
23.9**Fat Depth**
4**Foot score****Purchaser****Price****LOT 4****638/16**

Adelong

Sire
62/15Dam
75/11**NZTW INDEX**
992**RANK / 434**
22**SIL PERFORMANCE DATA****NLBBV**
0.071**WWT BV**
3.47**LW8 BV**
5.55**EMAcBV**
2.15**LEANYBV**
0.539**ACTUAL PERFORMANCE DATA****BR/RR**
2/2**Wean wt**
43**Autumn wt**
61**EMA**
24.1**Fat Depth**
4**Foot score****Purchaser****Price**

ADELONG POLL DORSETS

LOT 5 220/16

Adelong Sire Dam
119/14 710/09

		SIL PERFORMANCE DATA					
NZTW INDEX	RANK / 434	NLBBV	WWT BV	LW8 BV	EMAcBV	LEANYBV	
852	50	-0.109	3.62	7.02	0.08	0.062	

		ACTUAL PERFORMANCE DATA				
BR/RR	Wean wt	Autumn wt	EMA	Fat Depth	Foot score	
3/2	51	73	22.7	4	1 , 3	

Purchaser**Price**

LOT 6 429/16

Adelong Sire Dam
119/14 553/14

		SIL PERFORMANCE DATA					
NZTW INDEX	RANK / 434	NLBBV	WWT BV	LW8 BV	EMAcBV	LEANYBV	
856	49	-0.023	3.80	5.23	0.82	0.225	

		ACTUAL PERFORMANCE DATA				
BR/RR	Wean wt	Autumn wt	EMA	Fat Depth	Foot score	
1/1	55	70	23.4	4		

Purchaser**Price**

LOT 7 186/16

Forest View Sire Dam
99/12 110/14

		SIL PERFORMANCE DATA					
NZTW INDEX	RANK / 434	NLBBV	WWT BV	LW8 BV	EMAcBV	LEANYBV	
834	53	0.043	3.64	6.15	0.47	-0.009	

		ACTUAL PERFORMANCE DATA				
BR/RR	Wean wt	Autumn wt	EMA	Fat Depth	Foot score	
1/1	56	75	23.8	5		

Purchaser**Price**

LOT 8 72/16

Adelong Sire Dam
161/14 389/11

		SIL PERFORMANCE DATA					
NZTW INDEX	RANK / 434	NLBBV	WWT BV	LW8 BV	EMAcBV	LEANYBV	
1005	20	0.039	3.32	6.74	0.88	0.404	

		ACTUAL PERFORMANCE DATA				
BR/RR	Wean wt	Autumn wt	EMA	Fat Depth	Foot score	
3/2	49	75	23.6	4	1 , 5	

Purchaser**Price**

ADELONG POLL DORSETS

LOT 9 316/16

Adelong Sire Dam
5/12 729/12

		SIL PERFORMANCE DATA					
NZTW INDEX	RANK / 434	NLBBV	WWT BV	LW8 BV	EMAcBV	LEANYBV	
781	72	0.051	2.55	5.99	0.10	0.314	

		ACTUAL PERFORMANCE DATA				
BR/RR	Wean wt	Autumn wt	EMA	Fat Depth	Foot score	
1/	43	68	22	4		

Purchaser**Price**

LOT 10 208/16

Forest View Sire Dam
99/12 481/12

		SIL PERFORMANCE DATA					
NZTW INDEX	RANK / 434	NLBBV	WWT BV	LW8 BV	EMAcBV	LEANYBV	
845	51	-0.040	4.27	6.42	0.64	-0.019	

		ACTUAL PERFORMANCE DATA				
BR/RR	Wean wt	Autumn wt	EMA	Fat Depth	Foot score	
1/1	61	81	27	5		

Purchaser**Price**

LOT 11 71/16

Windermere Sire Dam
49/13 267/13

		SIL PERFORMANCE DATA					
NZTW INDEX	RANK / 434	NLBBV	WWT BV	LW8 BV	EMAcBV	LEANYBV	
843	52	0.031	3.61	6.06	1.87	0.232	

		ACTUAL PERFORMANCE DATA				
BR/RR	Wean wt	Autumn wt	EMA	Fat Depth	Foot score	
2/2	51	70	27.3	5	3 , 3	

Purchaser**Price**

LOT 12 117/16

Forest View Sire Dam
99/12 451/13

		SIL PERFORMANCE DATA					
NZTW INDEX	RANK / 434	NLBBV	WWT BV	LW8 BV	EMAcBV	LEANYBV	
921	36	-0.032	4.44	7.06	0.87	-0.057	

		ACTUAL PERFORMANCE DATA				
BR/RR	Wean wt	Autumn wt	EMA	Fat Depth	Foot score	
2/2	48	72	26	4		

Purchaser**Price**

ADELONG POLL DORSETS**LOT 13 309/16**

Adelong Sire Dam
161/11 364/11

		SIL PERFORMANCE DATA					
NZTW INDEX	RANK / 434	NLBBV	WWT BV	LW8 BV	EMAcBV	LEANYBV	
1154	6	0.010	3.70	7.83	0.67	0.488	

ACTUAL PERFORMANCE DATA					
BR/RR	Wean wt	Autumn wt	EMA	Fat Depth	Foot score
2/2	52	75	22.4	4	3 , 3

Purchaser**Price****LOT 14 135/16**

Adelong Sire Dam
144/14 10/13

		SIL PERFORMANCE DATA					
NZTW INDEX	RANK / 434	NLBBV	WWT BV	LW8 BV	EMAcBV	LEANYBV	
701	91	0.042	2.41	4.22	1.35	0.083	

ACTUAL PERFORMANCE DATA					
BR/RR	Wean wt	Autumn wt	EMA	Fat Depth	Foot score
2/2	46	66	23.7	5	1 , 3

Purchaser**Price****LOT 15 357/16**

Adelong Sire Dam
161/14 209/14

		SIL PERFORMANCE DATA					
NZTW INDEX	RANK / 434	NLBBV	WWT BV	LW8 BV	EMAcBV	LEANYBV	
1092	12	0.022	3.56	7.09	1.13	0.402	

ACTUAL PERFORMANCE DATA					
BR/RR	Wean wt	Autumn wt	EMA	Fat Depth	Foot score
2/1	49	71	25.1	4	2 , 3

Purchaser**Price****LOT 16 276/16**

Adelong Sire Dam
62/15 RT03/13

		SIL PERFORMANCE DATA					
NZTW INDEX	RANK / 434	NLBBV	WWT BV	LW8 BV	EMAcBV	LEANYBV	
682	93	-0.016	2.56	3.84	1.41	0.33	

ACTUAL PERFORMANCE DATA					
BR/RR	Wean wt	Autumn wt	EMA	Fat Depth	Foot score
2/2	47	69	25.9	4	1 , 3

Purchaser**Price**

ADELONG POLL DORSETS

LOT 17	233/16	Coastlands	Sire		Dam			
			40/10		742/12			
	NZTW INDEX	RANK / 434	SIL PERFORMANCE DATA					
			NLBBV	WWT BV	LW8 BV	EMAcBV	LEANYBV	
	675	94	-0.005	2.42	4.36	0.54	0.022	
BR/RR	Wean wt	ACTUAL PERFORMANCE DATA						
		Autumn wt	EMA	Fat Depth	Foot score			
2/2	47	67	20.3	4	1 , 1			
Purchaser				Price				
LOT 18	479/16	Coastlands	Sire		Dam			
			40/10		107/14			
	NZTW INDEX	RANK / 434	SIL PERFORMANCE DATA					
			NLBBV	WWT BV	LW8 BV	EMAcBV	LEANYBV	
	891	42	0.061	2.82	5.60	1.10	0.243	
BR/RR	Wean wt	ACTUAL PERFORMANCE DATA						
		Autumn wt	EMA	Fat Depth	Foot score			
2/2	45	65	22.6	4	1 , 3			
Purchaser				Price				
LOT 19	323/16	Adelong	Sire		Dam			
			161/11		851/11			
	NZTW INDEX	RANK / 434	SIL PERFORMANCE DATA					
			NLBBV	WWT BV	LW8 BV	EMAcBV	LEANYBV	
	1107	10	0.025	3.25	7.31	1.41	0.652	
BR/RR	Wean wt	ACTUAL PERFORMANCE DATA						
		Autumn wt	EMA	Fat Depth	Foot score			
2/2	49	71	24.8	5				
Purchaser				Price				
LOT 20	198/16	Adelong	Sire		Dam			
			161/11		511/14			
	NZTW INDEX	RANK / 434	SIL PERFORMANCE DATA					
			NLBBV	WWT BV	LW8 BV	EMAcBV	LEANYBV	
	987	24	0.018	2.95	6.53	1.16	0.624	
BR/RR	Wean wt	ACTUAL PERFORMANCE DATA						
		Autumn wt	EMA	Fat Depth	Foot score			
2/2	43	66	22.9	4	3 , 3			
Purchaser				Price				

ADELONG POLL DORSETS**LOT 21 250/16**

Adelong

Sire
62/15Dam
362/11

		SIL PERFORMANCE DATA					
NZTW INDEX	RANK / 434	NLBBV	WWT BV	LW8 BV	EMAcBV	LEANYBV	
732	83	0.020	2.65	4.54	1.30	0.29	

ACTUAL PERFORMANCE DATA					
BR/RR	Wean wt	Autumn wt	EMA	Fat Depth	Foot score
2/2	49	67	25.9	4	3 , 3

Purchaser**Price****LOT 22 520/16**

Adelong

Sire
161/11Dam
40/11

		SIL PERFORMANCE DATA					
NZTW INDEX	RANK / 434	NLBBV	WWT BV	LW8 BV	EMAcBV	LEANYBV	
986	25	-0.001	2.69	6.72	0.80	0.619	

ACTUAL PERFORMANCE DATA					
BR/RR	Wean wt	Autumn wt	EMA	Fat Depth	Foot score
1/1	53	75	23.3	4	3 , 3

Purchaser**Price****LOT 23 289/16**

Adelong

Sire
62/15Dam
267/12

		SIL PERFORMANCE DATA					
NZTW INDEX	RANK / 434	NLBBV	WWT BV	LW8 BV	EMAcBV	LEANYBV	
825	57	-0.005	3.52	5.08	0.89	0.313	

ACTUAL PERFORMANCE DATA					
BR/RR	Wean wt	Autumn wt	EMA	Fat Depth	Foot score
2/2	49	67	23.6	4	1 , 3

Purchaser**Price****LOT 24 401/16**

Adelong

Sire
62/15Dam
8/14

		SIL PERFORMANCE DATA					
NZTW INDEX	RANK / 434	NLBBV	WWT BV	LW8 BV	EMAcBV	LEANYBV	
669	96	-0.059	2.63	3.70	0.56	0.279	

ACTUAL PERFORMANCE DATA					
BR/RR	Wean wt	Autumn wt	EMA	Fat Depth	Foot score
1/1	45	62	20.1	3	

Purchaser**Price**

ADELONG POLL DORSETS

LOT 25 354/16

	Sire	Dam
Adelong	53/14	175/13

SIL PERFORMANCE DATA						
NZTW INDEX	RANK / 434	NLBBV	WWT BV	LW8 BV	EMAcBV	LEANYBV
884	43	0.058	3.88	6.57	0.49	0.042

ACTUAL PERFORMANCE DATA					
BR/RR	Wean wt	Autumn wt	EMA	Fat Depth	Foot score
2/2	50	68	20.3	4	1 , 3

Purchaser**Price**

LOT 26 300/16

	Sire	Dam
Adelong	144/14	797/12

SIL PERFORMANCE DATA						
NZTW INDEX	RANK / 434	NLBBV	WWT BV	LW8 BV	EMAcBV	LEANYBV
776	74	0.011	3.35	5.53	1.37	0.134

ACTUAL PERFORMANCE DATA					
BR/RR	Wean wt	Autumn wt	EMA	Fat Depth	Foot score
2/2	53	73	26.4	5	3 , 3

Purchaser**Price**

LOT 27 408/16

	Sire	Dam
Adelong	76/13	395/13

SIL PERFORMANCE DATA						
NZTW INDEX	RANK / 434	NLBBV	WWT BV	LW8 BV	EMAcBV	LEANYBV
946	30	0.012	3.67	6.89	1.53	0.188

ACTUAL PERFORMANCE DATA					
BR/RR	Wean wt	Autumn wt	EMA	Fat Depth	Foot score
2/2	47	68	27	4	3 , 3

Purchaser**Price**

LOT 28 293/16

	Sire	Dam
Forest View	99/12	129/14

SIL PERFORMANCE DATA						
NZTW INDEX	RANK / 434	NLBBV	WWT BV	LW8 BV	EMAcBV	LEANYBV
993	21	-0.027	3.83	6.82	0.77	0.251

ACTUAL PERFORMANCE DATA					
BR/RR	Wean wt	Autumn wt	EMA	Fat Depth	Foot score
1/1	56	79	25.8	4	1 , 5

Purchaser**Price**

ADELONG POLL DORSETS**LOT 29 168/16**

Adelong Sire Dam
62/15 644/10

		SIL PERFORMANCE DATA					
NZTW INDEX	RANK / 434	NLBBV	WWT BV	LW8 BV	EMAcBV	LEANYBV	
788	66	0.041	3.33	5.38	0.19	0.154	

ACTUAL PERFORMANCE DATA					
BR/RR	Wean wt	Autumn wt	EMA	Fat Depth	Foot score
3/2	40	64	20	4	

Purchaser**Price****LOT 30 196/16**

Coastlands Sire Dam
40/10 34/12

		SIL PERFORMANCE DATA					
NZTW INDEX	RANK / 434	NLBBV	WWT BV	LW8 BV	EMAcBV	LEANYBV	
615	102	0.090	1.68	3.51	0.61	0.136	

ACTUAL PERFORMANCE DATA					
BR/RR	Wean wt	Autumn wt	EMA	Fat Depth	Foot score
2/2	45	67	20.9	3	1 , 5

Purchaser**Price****LOT 31 182/16**

Adelong Sire Dam
5/12 422/11

		SIL PERFORMANCE DATA					
NZTW INDEX	RANK / 434	NLBBV	WWT BV	LW8 BV	EMAcBV	LEANYBV	
809	63	0.075	3.05	6.27	-0.30	0.199	

ACTUAL PERFORMANCE DATA					
BR/RR	Wean wt	Autumn wt	EMA	Fat Depth	Foot score
2/1	49	73	20.6	4	1 , 3

Purchaser**Price****LOT 32 468/16**

Brooklands Sire Dam
38/14 124/13

		SIL PERFORMANCE DATA					
NZTW INDEX	RANK / 434	NLBBV	WWT BV	LW8 BV	EMAcBV	LEANYBV	
738	81	-0.073	3.98	4.95	0.83	0.171	

ACTUAL PERFORMANCE DATA					
BR/RR	Wean wt	Autumn wt	EMA	Fat Depth	Foot score
1/1	60	70	21.6	3	3 , 3

Purchaser**Price**

ADELONG POLL DORSETS

LOT 33	22/16	Adelong		Sire	Dam			
				161/11	216/11			
		SIL PERFORMANCE DATA						
		NZTW INDEX	RANK / 434	NLBBV	WWT BV	LW8 BV	EMAcBV	LEANYBV
		1119	8	0.009	3.32	7.58	0.77	0.572
ACTUAL PERFORMANCE DATA								
BR/RR	Wean wt	Autumn wt	EMA	Fat Depth	Foot score			
2/2	50	74	23.2	4				
Purchaser				Price				
LOT 34	279/16	Adelong		Sire	Dam			
				119/14	24/09			
		SIL PERFORMANCE DATA						
		NZTW INDEX	RANK / 434	NLBBV	WWT BV	LW8 BV	EMAcBV	LEANYBV
		601	106	-0.024	3.15	4.96	-0.53	-0.056
ACTUAL PERFORMANCE DATA								
BR/RR	Wean wt	Autumn wt	EMA	Fat Depth	Foot score			
2/1	49	70	19.6	3	3 , 3			
Purchaser				Price				
LOT 35	581/16	Adelong		Sire	Dam			
				161/14	467/14			
		SIL PERFORMANCE DATA						
		NZTW INDEX	RANK / 434	NLBBV	WWT BV	LW8 BV	EMAcBV	LEANYBV
		1186	3	0.029	4.59	8.56	1.05	0.272
ACTUAL PERFORMANCE DATA								
BR/RR	Wean wt	Autumn wt	EMA	Fat Depth	Foot score			
2/2	52	75	23.7	5	3 , 3			
Purchaser				Price				
LOT 36	372/16	Adelong		Sire	Dam			
				5/12	268/09			
		SIL PERFORMANCE DATA						
		NZTW INDEX	RANK / 434	NLBBV	WWT BV	LW8 BV	EMAcBV	LEANYBV
		875	47	0.052	2.59	5.81	0.79	0.526
ACTUAL PERFORMANCE DATA								
BR/RR	Wean wt	Autumn wt	EMA	Fat Depth	Foot score			
1/1		75	24.6	4	1 , 3			
Purchaser				Price				

ADELONG POLL DORSETS

LOT 37	528/16		Sire		Dam			
		Adelong	5/12		451/11			
		SIL PERFORMANCE DATA						
		NZTW INDEX	RANK / 434	NLBBV	WWT BV	LW8 BV	EMAcBV	LEANYBV
		729	85	0.032	2.80	4.45	0.25	0.220
ACTUAL PERFORMANCE DATA								
	BR/RR	Wean wt	Autumn wt	EMA	Fat Depth	Foot score		
	2/2	53	68	21.2	3	1 , 3		
Purchaser				Price				
LOT 38	317/16		Sire		Dam			
		Adelong	109/12		433/13			
		SIL PERFORMANCE DATA						
		NZTW INDEX	RANK / 434	NLBBV	WWT BV	LW8 BV	EMAcBV	LEANYBV
		909	40	-0.013	5.02	6.96	0.70	-0.260
ACTUAL PERFORMANCE DATA								
	BR/RR	Wean wt	Autumn wt	EMA	Fat Depth	Foot score		
	2/2	54	72	23.8	4	3 , 3		
Purchaser				Price				
LOT 39	495/16		Sire		Dam			
		Adelong	5/12		167/12			
		SIL PERFORMANCE DATA						
		NZTW INDEX	RANK / 434	NLBBV	WWT BV	LW8 BV	EMAcBV	LEANYBV
		830	55	-0.002	2.57	6.16	0.93	0.416
ACTUAL PERFORMANCE DATA								
	BR/RR	Wean wt	Autumn wt	EMA	Fat Depth	Foot score		
	1/1	45	67	24.2	4	1 , 3		
Purchaser				Price				
LOT 40	514/16		Sire		Dam			
		Windermere	49/13		466/12			
		SIL PERFORMANCE DATA						
		NZTW INDEX	RANK / 434	NLBBV	WWT BV	LW8 BV	EMAcBV	LEANYBV
		702	89	-0.034	3.38	5.22	1.63	0.157
ACTUAL PERFORMANCE DATA								
	BR/RR	Wean wt	Autumn wt	EMA	Fat Depth	Foot score		
	2/2	53	66	22.6	4			
Purchaser				Price				

ADELONG POLL DORSETS

LOT 41 311/16

Adelong

Sire

5/12

Dam

497/09

SIL PERFORMANCE DATA						
NZTW INDEX	RANK / 434	NLBBV	WWT BV	LW8 BV	EMAcBV	LEANYBV
748	80	0.147	2.30	4.38	0.99	0.411

ACTUAL PERFORMANCE DATA					
BR/RR	Wean wt	Autumn wt	EMA	Fat Depth	Foot score
1/1	54	72	24.8	4	

Purchaser**Price**

LOT 42 447/16

Adelong

Sire

62/15

Dam

374/12

SIL PERFORMANCE DATA						
NZTW INDEX	RANK / 434	NLBBV	WWT BV	LW8 BV	EMAcBV	LEANYBV
801	65	-0.095	3.53	5.32	0.92	0.292

ACTUAL PERFORMANCE DATA					
BR/RR	Wean wt	Autumn wt	EMA	Fat Depth	Foot score
1/1	53	69	22.6	4	

Purchaser**Price**

LOT 43 88/16

Adelong

Sire

161/11

Dam

29/10

SIL PERFORMANCE DATA						
NZTW INDEX	RANK / 434	NLBBV	WWT BV	LW8 BV	EMAcBV	LEANYBV
1031	17	0.039	2.76	6.04	1.25	0.65

ACTUAL PERFORMANCE DATA					
BR/RR	Wean wt	Autumn wt	EMA	Fat Depth	Foot score
3/2	48	72	24.9	4	

Purchaser**Price**

LOT 44 483/16

Brooklands

Sire

38/14

Dam

107/13

SIL PERFORMANCE DATA						
NZTW INDEX	RANK / 434	NLBBV	WWT BV	LW8 BV	EMAcBV	LEANYBV
1094	11	-0.019	4.61	7.83	1.52	0.382

ACTUAL PERFORMANCE DATA					
BR/RR	Wean wt	Autumn wt	EMA	Fat Depth	Foot score
3/3	46	65	23.2	4	

Purchaser**Price**

ADELONG POLL DORSETS

LOT 45	260/16		Sire		Dam			
		Adelong	119/14		35/10			
		SIL PERFORMANCE DATA						
		NZTW INDEX	RANK / 434	NLBBV	WWT BV	LW8 BV	EMAcBV	LEANYBV
		940	32	0.009	3.64	7.84	0.35	0.08
ACTUAL PERFORMANCE DATA								
	BR/RR	Wean wt	Autumn wt	EMA	Fat Depth	Foot score		
	2/2	45	72	24.4	4			
Purchaser				Price				
LOT 46	402/16		Sire		Dam			
		Coastlands	40/10		607/14			
		SIL PERFORMANCE DATA						
		NZTW INDEX	RANK / 434	NLBBV	WWT BV	LW8 BV	EMAcBV	LEANYBV
		820	59	0.005	3.31	5.27	0.91	0.061
ACTUAL PERFORMANCE DATA								
	BR/RR	Wean wt	Autumn wt	EMA	Fat Depth	Foot score		
	1/1	56	73	23.8	4			
Purchaser				Price				
LOT 47	641/16		Sire		Dam			
		Adelong	62/15		198/12			
		SIL PERFORMANCE DATA						
		NZTW INDEX	RANK / 434	NLBBV	WWT BV	LW8 BV	EMAcBV	LEANYBV
		785	67	0.001	3.13	4.72	0.82	0.232
ACTUAL PERFORMANCE DATA								
	BR/RR	Wean wt	Autumn wt	EMA	Fat Depth	Foot score		
	1/1	44	63	22.6	4	1 , 3		
Purchaser				Price				
LOT 48	74/16		Sire		Dam			
		Adelong	161/14		389/11			
		SIL PERFORMANCE DATA						
		NZTW INDEX	RANK / 434	NLBBV	WWT BV	LW8 BV	EMAcBV	LEANYBV
		980	27	0.039	3.03	5.98	1.65	0.516
ACTUAL PERFORMANCE DATA								
	BR/RR	Wean wt	Autumn wt	EMA	Fat Depth	Foot score		
	3/2	45	65	24.3	4			
Purchaser				Price				

ADELONG POLL DORSETS

LOT 49	1/16		Sire		Dam			
		Adelong	161/14		146/13			
		SIL PERFORMANCE DATA						
		NZTW INDEX	RANK / 434	NLBBV	WWT BV	LW8 BV	EMAcBV	LEANYBV
		1030	18	0.000	3.16	7.31	1.00	0.381
ACTUAL PERFORMANCE DATA								
	BR/RR	Wean wt	Autumn wt	EMA	Fat Depth	Foot score		
	1/1	52	72	23.6	3			
Purchaser				Price				
LOT 50	327/16		Sire		Dam			
		Adelong	62/15		370/12			
		SIL PERFORMANCE DATA						
		NZTW INDEX	RANK / 434	NLBBV	WWT BV	LW8 BV	EMAcBV	LEANYBV
		990	23	0.071	3.47	6.90	1.34	0.326
ACTUAL PERFORMANCE DATA								
	BR/RR	Wean wt	Autumn wt	EMA	Fat Depth	Foot score		
	3/3	39	62	23.2	4	1 , 3		
Purchaser				Price				
LOT 51	159/16		Sire		Dam			
		Adelong	119/14		147/14			
		SIL PERFORMANCE DATA						
		NZTW INDEX	RANK / 434	NLBBV	WWT BV	LW8 BV	EMAcBV	LEANYBV
		766	75	-0.087	3.19	6.03	0.29	0.116
ACTUAL PERFORMANCE DATA								
	BR/RR	Wean wt	Autumn wt	EMA	Fat Depth	Foot score		
	1/1	54	70	21.7	4			
Purchaser				Price				
LOT 52	160/16		Sire		Dam			
		Adelong	161/11		573/14			
		SIL PERFORMANCE DATA						
		NZTW INDEX	RANK / 434	NLBBV	WWT BV	LW8 BV	EMAcBV	LEANYBV
		1159	5	-0.025	4.05	8.10	0.49	0.451
ACTUAL PERFORMANCE DATA								
	BR/RR	Wean wt	Autumn wt	EMA	Fat Depth	Foot score		
	2/2	55	76	22	4			
Purchaser				Price				

ADELONG POLL DORSETS**LOT 53 352/16**

Adelong Sire Dam
161/11 902/11

		SIL PERFORMANCE DATA					
NZTW INDEX	RANK / 434	NLBBV	WWT BV	LW8 BV	EMAcBV	LEANYBV	
1206	2	-0.048	3.55	8.58	0.95	0.619	

		ACTUAL PERFORMANCE DATA				
BR/RR	Wean wt	Autumn wt	EMA	Fat Depth	Foot score	
1/1	58	72	22.1	4		

Purchaser**Price****LOT 54 18/16**

Adelong Sire Dam
161/14 7/12

		SIL PERFORMANCE DATA					
NZTW INDEX	RANK / 434	NLBBV	WWT BV	LW8 BV	EMAcBV	LEANYBV	
1180	4	0.065	3.34	8.63	0.53	0.526	

		ACTUAL PERFORMANCE DATA				
BR/RR	Wean wt	Autumn wt	EMA	Fat Depth	Foot score	
2/	46	73	21.7	4		

Purchaser**Price****LOT 55 12/16**

Windermere Sire Dam
49/13 223/12

		SIL PERFORMANCE DATA					
NZTW INDEX	RANK / 434	NLBBV	WWT BV	LW8 BV	EMAcBV	LEANYBV	
884	43	0.113	3.99	6.80	0.83	0.127	

		ACTUAL PERFORMANCE DATA				
BR/RR	Wean wt	Autumn wt	EMA	Fat Depth	Foot score	
3/2	51	68	20.8	4		

Purchaser**Price****LOT 56 283/16**

Adelong Sire Dam
119/14 272/11

		SIL PERFORMANCE DATA					
NZTW INDEX	RANK / 434	NLBBV	WWT BV	LW8 BV	EMAcBV	LEANYBV	
880	46	-0.133	3.82	6.83	0.72	0.182	

		ACTUAL PERFORMANCE DATA				
BR/RR	Wean wt	Autumn wt	EMA	Fat Depth	Foot score	
2/2	50	69	22.4	3		

Purchaser**Price**

ADELONG POLL DORSETS**LOT 57 209/16**

Adelong Sire Dam
161/14 476/13

		SIL PERFORMANCE DATA					
NZTW INDEX	RANK / 434	NLBBV	WWT BV	LW8 BV	EMAcBV	LEANYBV	
1109	9	-0.075	3.83	8.37	0.88	0.452	

ACTUAL PERFORMANCE DATA					
BR/RR	Wean wt	Autumn wt	EMA	Fat Depth	Foot score
2/2	50	72	23	3	

Purchaser**Price****LOT 58 20/16**

Adelong Sire Dam
76/13 179/13

		SIL PERFORMANCE DATA					
NZTW INDEX	RANK / 434	NLBBV	WWT BV	LW8 BV	EMAcBV	LEANYBV	
1015	19	-0.007	3.62	7.57	0.95	0.418	

ACTUAL PERFORMANCE DATA					
BR/RR	Wean wt	Autumn wt	EMA	Fat Depth	Foot score
2/2	50	69	21.7	4	

Purchaser**Price****LOT 59 190/16**

Adelong Sire Dam
161/14 8/12

		SIL PERFORMANCE DATA					
NZTW INDEX	RANK / 434	NLBBV	WWT BV	LW8 BV	EMAcBV	LEANYBV	
921	36	0.043	2.82	5.90	0.66	0.424	

ACTUAL PERFORMANCE DATA					
BR/RR	Wean wt	Autumn wt	EMA	Fat Depth	Foot score
2/2	47	66	20.3	3	

Purchaser**Price****LOT 60 123/16**

Windermere Sire Dam
49/13 118/14

		SIL PERFORMANCE DATA					
NZTW INDEX	RANK / 434	NLBBV	WWT BV	LW8 BV	EMAcBV	LEANYBV	
881	45	0.096	4.01	6.78	1.06	-0.045	

ACTUAL PERFORMANCE DATA					
BR/RR	Wean wt	Autumn wt	EMA	Fat Depth	Foot score
2/2	49	68	22.1	4	

Purchaser**Price**

ADELONG POLL DORSETS

LOT 61	403/16		Sire		Dam		
		Adelong	161/14		457/14		
SIL PERFORMANCE DATA							
NZTW INDEX	RANK / 434		NLBBV	WWT BV	LW8 BV	EMAcBV	LEANYBV
976	28		0.073	3.09	6.51	0.97	0.412
ACTUAL PERFORMANCE DATA							
BR/RR	Wean wt		Autumn wt	EMA	Fat Depth	Foot score	
2/2	43		63	20.3	4		
Purchaser				Price			

LOT 62	490/16		Sire		Dam		
		Adelong	119/14		637/12		
SIL PERFORMANCE DATA							
NZTW INDEX	RANK / 434		NLBBV	WWT BV	LW8 BV	EMAcBV	LEANYBV
718	86		0.052	3.05	5.85	0.54	0.013
ACTUAL PERFORMANCE DATA							
BR/RR	Wean wt		Autumn wt	EMA	Fat Depth	Foot score	
1/1	52		65	20.2	3		
Purchaser				Price			

LOT 63	529/16		Sire		Dam		
		Adelong	5/12		451/11		
SIL PERFORMANCE DATA							
NZTW INDEX	RANK / 434		NLBBV	WWT BV	LW8 BV	EMAcBV	LEANYBV
733	82		0.032	2.85	4.66	0.21	0.200
ACTUAL PERFORMANCE DATA							
BR/RR	Wean wt		Autumn wt	EMA	Fat Depth	Foot score	
2/2	53		69	21.1	4		
Purchaser				Price			

LOT 64	136/16		Sire		Dam		
		Adelong	76/13		821/12		
SIL PERFORMANCE DATA							
NZTW INDEX	RANK / 434		NLBBV	WWT BV	LW8 BV	EMAcBV	LEANYBV
664	97		-0.040	3.24	5.23	0.30	0.028
ACTUAL PERFORMANCE DATA							
BR/RR	Wean wt		Autumn wt	EMA	Fat Depth	Foot score	
2/2	54		70	21.7	4		
Purchaser				Price			

ADELONG POLL DORSETS

LOT 65	399/16	Brooklands	Sire		Dam				
			38/14		271/12				
			SIL PERFORMANCE DATA						
			NZTW INDEX	RANK / 434	NLBBV	WWT BV	LW8 BV	EMAcBV	LEANYBV
			781	72	0.057	4.17	6.17	0.85	0.163
ACTUAL PERFORMANCE DATA									
BR/RR	Wean wt	Autumn wt	EMA	Fat Depth	Foot score				
3/2	46	64	21.2	4					
Purchaser				Price					
LOT 66	677/16	Adelong	Sire		Dam				
			62/15		436/13				
			SIL PERFORMANCE DATA						
			NZTW INDEX	RANK / 434	NLBBV	WWT BV	LW8 BV	EMAcBV	LEANYBV
			1038	15	-0.001	3.39	5.98	1.74	0.579
ACTUAL PERFORMANCE DATA									
BR/RR	Wean wt	Autumn wt	EMA	Fat Depth	Foot score				
2/2	39	60	21.7	3					
Purchaser				Price					
LOT 67	134/16	Adelong	Sire		Dam				
			144/14		10/13				
			SIL PERFORMANCE DATA						
			NZTW INDEX	RANK / 434	NLBBV	WWT BV	LW8 BV	EMAcBV	LEANYBV
			817	60	0.042	2.77	4.99	1.45	0.155
ACTUAL PERFORMANCE DATA									
BR/RR	Wean wt	Autumn wt	EMA	Fat Depth	Foot score				
2/2	50	72	26.1	4	1 , 3				
Purchaser				Price					
LOT 68	580/16	Adelong	Sire		Dam				
			161/14		467/14				
			SIL PERFORMANCE DATA						
			NZTW INDEX	RANK / 434	NLBBV	WWT BV	LW8 BV	EMAcBV	LEANYBV
			1280	1	0.029	4.57	9.02	1.75	0.394
ACTUAL PERFORMANCE DATA									
BR/RR	Wean wt	Autumn wt	EMA	Fat Depth	Foot score				
2/2	49	74	29	5					
Purchaser				Price					

ADELONG POLL DORSETS

LOT 69	36/16		Sire		Dam		
		Coastlands	40/10		329/13		
SIL PERFORMANCE DATA							
NZTW INDEX	RANK / 434		NLBBV	WWT BV	LW8 BV	EMAcBV	LEANYBV
731	84		0.064	2.44	4.83	1.16	0.121
ACTUAL PERFORMANCE DATA							
BR/RR	Wean wt		Autumn wt	EMA	Fat Depth	Foot score	
2/2	47		69	24.7	5	2 , 3	
Purchaser				Price			

LOT 70	218/16		Sire		Dam		
		Adelong	161/14		613/13		
SIL PERFORMANCE DATA							
NZTW INDEX	RANK / 434		NLBBV	WWT BV	LW8 BV	EMAcBV	LEANYBV
817	60		0.024	2.15	4.61	1.12	0.392
ACTUAL PERFORMANCE DATA							
BR/RR	Wean wt		Autumn wt	EMA	Fat Depth	Foot score	
2/2	42		64	22.6	4		
Purchaser				Price			

LOT 71	147/16		Sire		Dam		
		Adelong	144/14		909/11		
SIL PERFORMANCE DATA							
NZTW INDEX	RANK / 434		NLBBV	WWT BV	LW8 BV	EMAcBV	LEANYBV
784	68		0.026	2.92	5.67	1.18	0.218
ACTUAL PERFORMANCE DATA							
BR/RR	Wean wt		Autumn wt	EMA	Fat Depth	Foot score	
2/1	51		73	25.6	5	1 , 3	
Purchaser				Price			

LOT 72	480/16		Sire		Dam		
		Coastlands	40/10		107/14		
SIL PERFORMANCE DATA							
NZTW INDEX	RANK / 434		NLBBV	WWT BV	LW8 BV	EMAcBV	LEANYBV
904	41		0.061	2.93	5.44	1.39	0.256
ACTUAL PERFORMANCE DATA							
BR/RR	Wean wt		Autumn wt	EMA	Fat Depth	Foot score	
2/2	48		64	22.6	4		
Purchaser				Price			

ADELONG POLL DORSETS

LOT 73	111/16		Sire	Dam				
		Adelong	76/13	289/14				
		SIL PERFORMANCE DATA						
		NZTW INDEX	RANK / 434	NLBBV	WWT BV	LW8 BV	EMAcBV	LEANYBV
		759	78	0.008	2.67	5.65	0.63	0.289
ACTUAL PERFORMANCE DATA								
	BR/RR	Wean wt	Autumn wt	EMA	Fat Depth	Foot score		
	1/1	52	70	22.6	4			
Purchaser				Price				
LOT 74	275/16		Sire	Dam				
		Adelong	62/15	RT03/13				
		SIL PERFORMANCE DATA						
		NZTW INDEX	RANK / 434	NLBBV	WWT BV	LW8 BV	EMAcBV	LEANYBV
		664	97	-0.016	2.22	3.53	1.78	0.417
ACTUAL PERFORMANCE DATA								
	BR/RR	Wean wt	Autumn wt	EMA	Fat Depth	Foot score		
	2/2	39	59	24.2	4			
Purchaser				Price				
LOT 75	57/16		Sire	Dam				
		Coastlands	40/10	148/10				
		SIL PERFORMANCE DATA						
		NZTW INDEX	RANK / 434	NLBBV	WWT BV	LW8 BV	EMAcBV	LEANYBV
		422	110	0.010	1.35	2.20	1.50	0.148
ACTUAL PERFORMANCE DATA								
	BR/RR	Wean wt	Autumn wt	EMA	Fat Depth	Foot score		
	1/1	56	65	23.4	5			
Purchaser				Price				
LOT 76	217/16		Sire	Dam				
		Coastlands	40/10	2/11				
		SIL PERFORMANCE DATA						
		NZTW INDEX	RANK / 434	NLBBV	WWT BV	LW8 BV	EMAcBV	LEANYBV
		672	95	0.086	1.63	4.18	1.32	0.221
ACTUAL PERFORMANCE DATA								
	BR/RR	Wean wt	Autumn wt	EMA	Fat Depth	Foot score		
	2/1	43	62	22.6	4			
Purchaser				Price				

ADELONG POLL DORSETS

LOT 77 472/16

Adelong

Sire
34/15Dam
79/14

		SIL PERFORMANCE DATA					
NZTW INDEX	RANK / 434	NLBBV	WWT BV	LW8 BV	EMAcBV	LEANYBV	
925	35	0.072	3.55	7.30	0.78	0.197	

ACTUAL PERFORMANCE DATA					
BR/RR	Wean wt	Autumn wt	EMA	Fat Depth	Foot score
2/2	42	64	20.9	4	

Purchaser**Price**

LOT 78 176/16

Adelong

Sire
161/14Dam
256/14

		SIL PERFORMANCE DATA					
NZTW INDEX	RANK / 434	NLBBV	WWT BV	LW8 BV	EMAcBV	LEANYBV	
828	56	0.063	2.53	5.35	0.89	0.358	

ACTUAL PERFORMANCE DATA					
BR/RR	Wean wt	Autumn wt	EMA	Fat Depth	Foot score
2/2	39	59	21.5	3	

Purchaser**Price**

LOT 79 635/16

Adelong

Sire
34/15Dam
152/14

		SIL PERFORMANCE DATA					
NZTW INDEX	RANK / 434	NLBBV	WWT BV	LW8 BV	EMAcBV	LEANYBV	
981	26	0.007	3.45	6.83	0.93	0.411	

ACTUAL PERFORMANCE DATA					
BR/RR	Wean wt	Autumn wt	EMA	Fat Depth	Foot score
1/1	48	67	20.6	3	

Purchaser**Price**

LOT 80 674/16

Adelong

Sire
161/14Dam
526/12

		SIL PERFORMANCE DATA					
NZTW INDEX	RANK / 434	NLBBV	WWT BV	LW8 BV	EMAcBV	LEANYBV	
1059	14	0.069	3.52	7.35	0.93	0.464	

ACTUAL PERFORMANCE DATA					
BR/RR	Wean wt	Autumn wt	EMA	Fat Depth	Foot score
2/2	37	59	19.7	3	1 , 3

Purchaser**Price**

ADELONG POLL DORSETS

LOT 81	89/16	Sire		Dam				
		Adelong	161/11		29/10			
		SIL PERFORMANCE DATA						
		NZTW INDEX	RANK / 434	NLBBV	WWT BV	LW8 BV	EMAcBV	LEANYBV

Purchaser**Price**

LOT 82	670/16	Sire		Dam			
		Adelong	161/11		19/14		
SIL PERFORMANCE DATA							
NZTW INDEX	RANK / 434	NLBBV	WWT BV	LW8 BV	EMAcBV	LEANYBV	
1132	7	-0.017	3.44	7.62	1.30	0.612	
ACTUAL PERFORMANCE DATA							
BR/RR	Wean wt	Autumn wt	EMA	Fat Depth	Foot score		
2/2	38	62	19.7	4			

Purchaser**Price**

LOT 83	343/16	Sire		Dam				
		Adelong	144/14		350/14			
		SIL PERFORMANCE DATA						
		NZTW INDEX	RANK / 434	NLBBV	WWT BV	LW8 BV	EMAcBV	LEANYBV

Purchaser**Price**

LOT 84	544/16	Sire		Dam			
		Adelong	53/14		519/13		
		SIL PERFORMANCE DATA					
		NZTW INDEX	RANK / 434	NLBBV	WWT BV	LW8 BV	EMAcBV

Purchaser**Price**

ADELONG POLL DORSETS

LOT 85	99/16	Adelong		Sire 53/14		Dam 431/14	
		SIL PERFORMANCE DATA					
	NZTW INDEX	RANK / 434	NLBBV	WWT BV	LW8 BV	EMAcBV	LEANYBV
	761	77	0.078	2.49	4.83	1.12	0.229
	ACTUAL PERFORMANCE DATA						
	BR/RR	Wean wt	Autumn wt	EMA	Fat Depth	Foot score	
	2/2	43	63	22.4	4		
	Purchaser				Price		
	LOT 86	228/16	Coastlands		Sire 40/10		Dam 677/14
SIL PERFORMANCE DATA							
NZTW INDEX		RANK / 434	NLBBV	WWT BV	LW8 BV	EMAcBV	LEANYBV
705		88	0.092	2.21	4.50	0.58	0.217
ACTUAL PERFORMANCE DATA							
BR/RR		Wean wt	Autumn wt	EMA	Fat Depth	Foot score	
1/1		49	68	22.1	4	3 , 3	
Purchaser				Price			
LOT 87		205/16	Adelong		Sire 161/14		Dam 615/13
	SIL PERFORMANCE DATA						
	NZTW INDEX	RANK / 434	NLBBV	WWT BV	LW8 BV	EMAcBV	LEANYBV
	918	38	0.016	3.41	6.54	0.67	0.333
	ACTUAL PERFORMANCE DATA						
	BR/RR	Wean wt	Autumn wt	EMA	Fat Depth	Foot score	
	2/2	45	64	20.3	3		
	Purchaser				Price		
	LOT 88	264/16	Adelong		Sire 62/15		Dam 604/12
SIL PERFORMANCE DATA							
NZTW INDEX		RANK / 434	NLBBV	WWT BV	LW8 BV	EMAcBV	LEANYBV
783		70	-0.057	3.45	5.12	0.99	0.276
ACTUAL PERFORMANCE DATA							
BR/RR		Wean wt	Autumn wt	EMA	Fat Depth	Foot score	
1/1		53	67	21.7	3		
Purchaser				Price			

ADELONG POLL DORSETS

LOT 89	548/16		Sire		Dam		
		Coastlands	40/10		723/14		
SIL PERFORMANCE DATA							
NZTW INDEX	RANK / 434		NLBBV	WWT BV	LW8 BV	EMAcBV	LEANYBV
759	78		0.120	2.56	5.08	0.48	0.154
ACTUAL PERFORMANCE DATA							
BR/RR	Wean wt		Autumn wt	EMA	Fat Depth	Foot score	
2/2	47		65	19.7	4		
Purchaser				Price			

LOT 90	438/16		Sire		Dam		
		Adelong	161/11		423/14		
SIL PERFORMANCE DATA							
NZTW INDEX	RANK / 434		NLBBV	WWT BV	LW8 BV	EMAcBV	LEANYBV
1062	13		0.009	2.48	7.03	1.38	0.699
ACTUAL PERFORMANCE DATA							
BR/RR	Wean wt		Autumn wt	EMA	Fat Depth	Foot score	
2/2	35		61	21.5	4		
Purchaser				Price			

LOT 91	522/16		Sire		Dam		
		Adelong	119/14		241/09		
SIL PERFORMANCE DATA							
NZTW INDEX	RANK / 434		NLBBV	WWT BV	LW8 BV	EMAcBV	LEANYBV
702	89		-0.036	2.79	5.67	0.40	0.103
ACTUAL PERFORMANCE DATA							
BR/RR	Wean wt		Autumn wt	EMA	Fat Depth	Foot score	
3/	46		66	21.3	4		
Purchaser				Price			

LOT 92	9/16		Sire		Dam		
		Coastlands	40/10		3/10		
SIL PERFORMANCE DATA							
NZTW INDEX	RANK / 434		NLBBV	WWT BV	LW8 BV	EMAcBV	LEANYBV
766	75		0.062	2.03	4.48	1.15	0.234
ACTUAL PERFORMANCE DATA							
BR/RR	Wean wt		Autumn wt	EMA	Fat Depth	Foot score	
3/3	34		58	21.3	3		
Purchaser				Price			

ADELONG POLL DORSETS

LOT 93	180/16		Sire	Dam		
		Coastlands	40/10	5/11		
SIL PERFORMANCE DATA						
NZTW INDEX	RANK / 434	NLBBV	WWT BV	LW8 BV	EMAcBV	LEANYBV
613	103	0.115	1.77	4.13	0.47	0.073
ACTUAL PERFORMANCE DATA						
BR/RR	Wean wt	Autumn wt	EMA	Fat Depth	Foot score	
2/2	48	70	20.8	4	2 , 3	

Purchaser**Price**

LOT 94	140/16		Sire	Dam		
		Adelong	5/12	813/13		
		SIL PERFORMANCE DATA				
NZTW INDEX	RANK / 434	NLBBV	WWT BV	LW8 BV	EMAcBV	LEANYBV
874	48	0.108	2.55	6.05	0.67	0.345
ACTUAL PERFORMANCE DATA						
BR/RR	Wean wt	Autumn wt	EMA	Fat Depth	Foot score	
3/3	36	60	20.8	4		

Purchaser**Price**

LOT 95	162/16		Sire	Dam		
		Adelong	5/12	67/13		
		SIL PERFORMANCE DATA				
NZTW INDEX	RANK / 434	NLBBV	WWT BV	LW8 BV	EMAcBV	LEANYBV
699	92	-0.023	2.18	4.78	0.36	0.261
ACTUAL PERFORMANCE DATA						
BR/RR	Wean wt	Autumn wt	EMA	Fat Depth	Foot score	
1/1	56	68	19.7	3	1 , 1	

Purchaser**Price**

LOT 96	594/16		Sire	Dam		
		Adelong	144/14	592/13		
		SIL PERFORMANCE DATA				
NZTW INDEX	RANK / 434	NLBBV	WWT BV	LW8 BV	EMAcBV	LEANYBV
630	101	-0.007	2.49	3.24	1.32	0.082
ACTUAL PERFORMANCE DATA						
BR/RR	Wean wt	Autumn wt	EMA	Fat Depth	Foot score	
2/1	45	59	21.7	3		

Purchaser**Price**

ADELONG POLL DORSETS**LOT 97 253/16**

Adelong Sire Dam
161/14 740/13

		SIL PERFORMANCE DATA					
NZTW INDEX	RANK / 434	NLBBV	WWT BV	LW8 BV	EMAcBV	LEANYBV	
970	29	0.030	2.98	6.38	1.14	0.433	

		ACTUAL PERFORMANCE DATA				
BR/RR	Wean wt	Autumn wt	EMA	Fat Depth	Foot score	
2/2	46	64	21.8	3		

Purchaser**Price****LOT 98 437/16**

Adelong Sire Dam
161/11 423/14

		SIL PERFORMANCE DATA					
NZTW INDEX	RANK / 434	NLBBV	WWT BV	LW8 BV	EMAcBV	LEANYBV	
834	53	0.009	1.82	4.54	1.87	0.663	

		ACTUAL PERFORMANCE DATA				
BR/RR	Wean wt	Autumn wt	EMA	Fat Depth	Foot score	
2/2	34	50	20.6	4		

Purchaser**Price****LOT 99 92/16**

Adelong Sire Dam
161/11 329/12

		SIL PERFORMANCE DATA					
NZTW INDEX	RANK / 434	NLBBV	WWT BV	LW8 BV	EMAcBV	LEANYBV	
932	33	0.030	2.79	6.45	0.53	0.588	

		ACTUAL PERFORMANCE DATA				
BR/RR	Wean wt	Autumn wt	EMA	Fat Depth	Foot score	
2/1	55	73	20.9	4		

Purchaser**Price****LOT 100 84/16**

Adelong Sire Dam
119/14 183/14

		SIL PERFORMANCE DATA					
NZTW INDEX	RANK / 434	NLBBV	WWT BV	LW8 BV	EMAcBV	LEANYBV	
782	71	-0.059	3.26	5.33	1.09	0.254	

		ACTUAL PERFORMANCE DATA				
BR/RR	Wean wt	Autumn wt	EMA	Fat Depth	Foot score	
2/2	53	62	20.9	3		

Purchaser**Price**

ADELONG POLL DORSETS

LOT 101	222/16		Sire		Dam		
		Coastlands	40/10		681/14		
SIL PERFORMANCE DATA							
NZTW INDEX	RANK / 434		NLBBV	WWT BV	LW8 BV	EMAcBV	LEANYBV
825	57		0.105	2.42	4.99	1.25	0.219
ACTUAL PERFORMANCE DATA							
BR/RR	Wean wt		Autumn wt	EMA	Fat Depth	Foot score	
2/2	42		60	22	4	3 , 3	
Purchaser				Price			

LOT 102	389/16		Sire		Dam		
		Adelong	119/14		534/13		
SIL PERFORMANCE DATA							
NZTW INDEX	RANK / 434		NLBBV	WWT BV	LW8 BV	EMAcBV	LEANYBV
807	64		-0.062	3.13	6.14	1.10	0.161
ACTUAL PERFORMANCE DATA							
BR/RR	Wean wt		Autumn wt	EMA	Fat Depth	Foot score	
2/3	41		59	21.7	4		
Purchaser				Price			

LOT 103	792/16		Sire		Dam		
		Adelong	53/14				
SIL PERFORMANCE DATA							
NZTW INDEX	RANK / 434		NLBBV	WWT BV	LW8 BV	EMAcBV	LEANYBV
550	109		0.039	2.28	3.37	1.00	0.162
ACTUAL PERFORMANCE DATA							
BR/RR	Wean wt		Autumn wt	EMA	Fat Depth	Foot score	
	44		57	20	3	3 , 3	
Purchaser				Price			

LOT 104	395/16		Sire		Dam		
		Adelong	62/15		2/12		
SIL PERFORMANCE DATA							
NZTW INDEX	RANK / 434		NLBBV	WWT BV	LW8 BV	EMAcBV	LEANYBV
814	62		-0.030	2.95	4.68	1.16	0.426
ACTUAL PERFORMANCE DATA							
BR/RR	Wean wt		Autumn wt	EMA	Fat Depth	Foot score	
1/1	50		67	21.8	4		
Purchaser				Price			

ADELONG POLL DORSETS

LOT 105	335/16	Sire		Dam				
		Adelong		144/14		143/14		
		SIL PERFORMANCE DATA						
		NZTW INDEX	RANK / 434	NLBBV	WWT BV	LW8 BV	EMAcBV	LEANYBV
		659	99	0.075	2.25	3.42	1.42	0.137
ACTUAL PERFORMANCE DATA								
BR/RR	Wean wt	Autumn wt	EMA	Fat Depth	Foot score			
3/3	37	53	19.6	3				
Purchaser				Price				

LOT 106	530/16	Sire		Dam			
		Adelong	5/12	794/10			
SIL PERFORMANCE DATA							
NZTW INDEX	RANK / 434	NLBBV	WWT BV	LW8 BV	EMAcBV	LEANYBV	
590	107	-0.066	1.91	3.86	0.39	0.243	
ACTUAL PERFORMANCE DATA							
BR/RR	Wean wt	Autumn wt	EMA	Fat Depth	Foot score		
2/2	39	58	19.8	3			
Purchaser				Price			

LOT 107	207/16	Sire		Dam				
		Adelong	119/14	106/14				
		SIL PERFORMANCE DATA						
		NZTW INDEX	RANK / 434	NLBBV	WWT BV	LW8 BV	EMAcBV	LEANYBV
		648	100	-0.119	3.56	5.80	-0.09	-0.037
ACTUAL PERFORMANCE DATA								
BR/RR	Wean wt	Autumn wt	EMA	Fat Depth	Foot score			
1/1	54	66	18.7	3				
Purchaser				Price				

LOT 108	463/16	Sire		Dam			
		Coastlands	40/10	763/14			
SIL PERFORMANCE DATA							
NZTW INDEX	RANK / 434	NLBBV	WWT BV	LW8 BV	EMAcBV	LEANYBV	
711	87	0.092	2.25	4.07	0.86	0.178	
ACTUAL PERFORMANCE DATA							
BR/RR	Wean wt	Autumn wt	EMA	Fat Depth	Foot score		
2/2	43	58	19.2	3	3 , 3		
Purchaser				Price			

ADELONG POLL DORSETS

LOT 109	120/16		Sire	Dam				
		Adelong	119/14	595/14				
		SIL PERFORMANCE DATA						
		NZTW INDEX	RANK / 434	NLBBV	WWT BV	LW8 BV	EMAcBV	LEANYBV
		559	108	-0.044	2.68	3.92	0.71	-0.08
ACTUAL PERFORMANCE DATA								
BR/RR	Wean wt	Autumn wt	EMA	Fat Depth	Foot score			
2/2	44	56	18.4	3				
Purchaser				Price				

LOT 110	235/16		Sire	Dam				
		Adelong	144/14	787/13				
		SIL PERFORMANCE DATA						
		NZTW INDEX	RANK / 434	NLBBV	WWT BV	LW8 BV	EMAcBV	LEANYBV
		603	105	0.032	2.07	3.68	0.83	0.141
		ACTUAL PERFORMANCE DATA						
	BR/RR	Wean wt	Autumn wt	EMA	Fat Depth	Foot score		
	2/2	40	59	19.3	3	2 , 3		
	Purchaser			Price				

ADELONG TEXEL X POLL DORSET 1
SHEAR RAMS

ADELONG TEXEL X POLL DORSET 1SHEAR RAMS

Date Scanned - 30/4/17

LOT 111 16/16

ACTUAL PERFORMANCE DATA

B/R	LW8	EMA	Fat Depth
2/2	62.0	25.8	4

Purchaser

Price

LOT 112 40/16

ACTUAL PERFORMANCE DATA

B/R	LW8	EMA	Fat Depth
1/1	66.0	21.3	3

Purchaser

Price

LOT 113 4/16

ACTUAL PERFORMANCE DATA

B/R	LW8	EMA	Fat Depth
1/1	75.0	24.9	4

Purchaser

Price

LOT 114 13/16

ACTUAL PERFORMANCE DATA

B/R	LW8	EMA	Fat Depth
1/1	67.0	21.3	4

Purchaser

Price

LOT 115 5/16

ACTUAL PERFORMANCE DATA

B/R	LW8	EMA	Fat Depth
2/2	66.0	20.6	4

Purchaser

Price

LOT 116 36/16

ACTUAL PERFORMANCE DATA

B/R	LW8	EMA	Fat Depth
2/2	69.0	22.6	4

Purchaser

Price

LOT 117 18/16

ACTUAL PERFORMANCE DATA

B/R	LW8	EMA	Fat Depth
1/1	76.0	21.7	4

Purchaser

Price

LOT 118 17/16

ACTUAL PERFORMANCE DATA

B/R	LW8	EMA	Fat Depth
2/2	69.0	22.0	4

Purchaser

Price

ADELONG TEXEL X POLL DORSET 1SHEAR RAMS

LOT 119 37/16**ACTUAL PERFORMANCE DATA**

B/R	LW8	EMA	Fat Depth
1/1	72.0	19.1	3

Purchaser**Price**

LOT 120 7/16**ACTUAL PERFORMANCE DATA**

B/R	LW8	EMA	Fat Depth
1/1	80.0	24.9	4

Purchaser**Price**

LOT 121 8/16**ACTUAL PERFORMANCE DATA**

B/R	LW8	EMA	Fat Depth
1/1	70.0	22.5	3

Purchaser**Price**

LOT 122 14/16**ACTUAL PERFORMANCE DATA**

B/R	LW8	EMA	Fat Depth
1/1	67.0	20.7	3

Purchaser**Price**

LOT 123 3/16**ACTUAL PERFORMANCE DATA**

B/R	LW8	EMA	Fat Depth
1/1	69.0	24.1	4

Purchaser**Price**

LOT 124 6/16**ACTUAL PERFORMANCE DATA**

B/R	LW8	EMA	Fat Depth
1/1	67.0	19.8	3

Purchaser**Price**

ADELONG
SUFFOLK X TEXEL X POLL DORSET 1
SHEAR RAMS

ADELONG SUFFOLK X TEXEL X POLL DORSET 1 SHEAR RAMS

Date Scanned - 30/4/16**LOT 125 24/16****ACTUAL PERFORMANCE DATA**

B/R	LW8	EMA	Fat Depth
2/2	74.0	20.6	4

Purchaser**Price**

LOT 126 33/16**ACTUAL PERFORMANCE DATA**

B/R	LW8	EMA	Fat Depth
1/1	71.0	23.7	4

Purchaser**Price**

LOT 127 14/16**ACTUAL PERFORMANCE DATA**

B/R	LW8	EMA	Fat Depth
2/2	69.0	21.6	4

Purchaser**Price**

LOT 128 8/16**ACTUAL PERFORMANCE DATA**

B/R	LW8	EMA	Fat Depth
2/2	68.0	20.9	4

Purchaser**Price**

LOT 129 12/16**ACTUAL PERFORMANCE DATA**

B/R	LW8	EMA	Fat Depth
1/1	67.0	21.3	4

Purchaser**Price**

LOT 130 27/16**ACTUAL PERFORMANCE DATA**

B/R	LW8	EMA	Fat Depth
2/2	71.0	25.4	4

Purchaser**Price**

LOT 131 6/16**ACTUAL PERFORMANCE DATA**

B/R	LW8	EMA	Fat Depth
2/2	79.0	28.3	4

Purchaser**Price**

LOT 132 5/16**ACTUAL PERFORMANCE DATA**

B/R	LW8	EMA	Fat Depth
1/1	77.0	25.2	3

Purchaser**Price**

ADELONG SUFFOLK X TEXEL X POLL DORSET 1 SHEAR RAMS

LOT 133 11/16**ACTUAL PERFORMANCE DATA**

B/R	LW8	EMA	Fat Depth
1/1	80.0	23.6	4

Purchaser**Price**

LOT 134 25/16**ACTUAL PERFORMANCE DATA**

B/R	LW8	EMA	Fat Depth
1/1	74.0	22.4	4

Purchaser**Price**

LOT 135 26/16**ACTUAL PERFORMANCE DATA**

B/R	LW8	EMA	Fat Depth
1/1	71.0	22.6	4

Purchaser**Price**

LOT 136 44/16**ACTUAL PERFORMANCE DATA**

B/R	LW8	EMA	Fat Depth
2/2	59.0	19.7	3

Purchaser**Price**

ELLESMERE **TRANSPORT**

Providing all the services you require....just a phone call away.



PERSONALISED

SERVICE

Servicing your

Community

For

78 years

- Daily Freight
- Courier Service
- Bulk Grain
- Sand
- Shingle
- Ready Mix Concrete
- Fertiliser Spreading
- Bulk Lime
- Stock Cartage
- Spreadmark Certified Spreaders
- Proof of Placement for Fertiliser Spreading
- All trucks fitted with GPS navigation
- Variable rate spreading available

LEESTON 03 324 8070, DUNSANDEL 03 325 4039

PURCHASER'S INSTRUCTION SLIP

(To be filled in and handed to the auctioneers before leaving the sale)

NAME:

ADDRESS:

PHONE:

PURCHASES:

Lot No: Price:

Lot No: Price:

Lot No: Price:

Lot No: Price:

Lot No: Price:

Lot No: Price:

Lot No: Price:

Lot No: Price:

TRANSIT INSURANCE: YES/NO

INSURANCE COMPANY:

OR TIME COVER:

TRANSPORT INSTRUCTIONS:

.....

COMPANY PURCHASES TO BE DEBITED TO:

COMPANY:

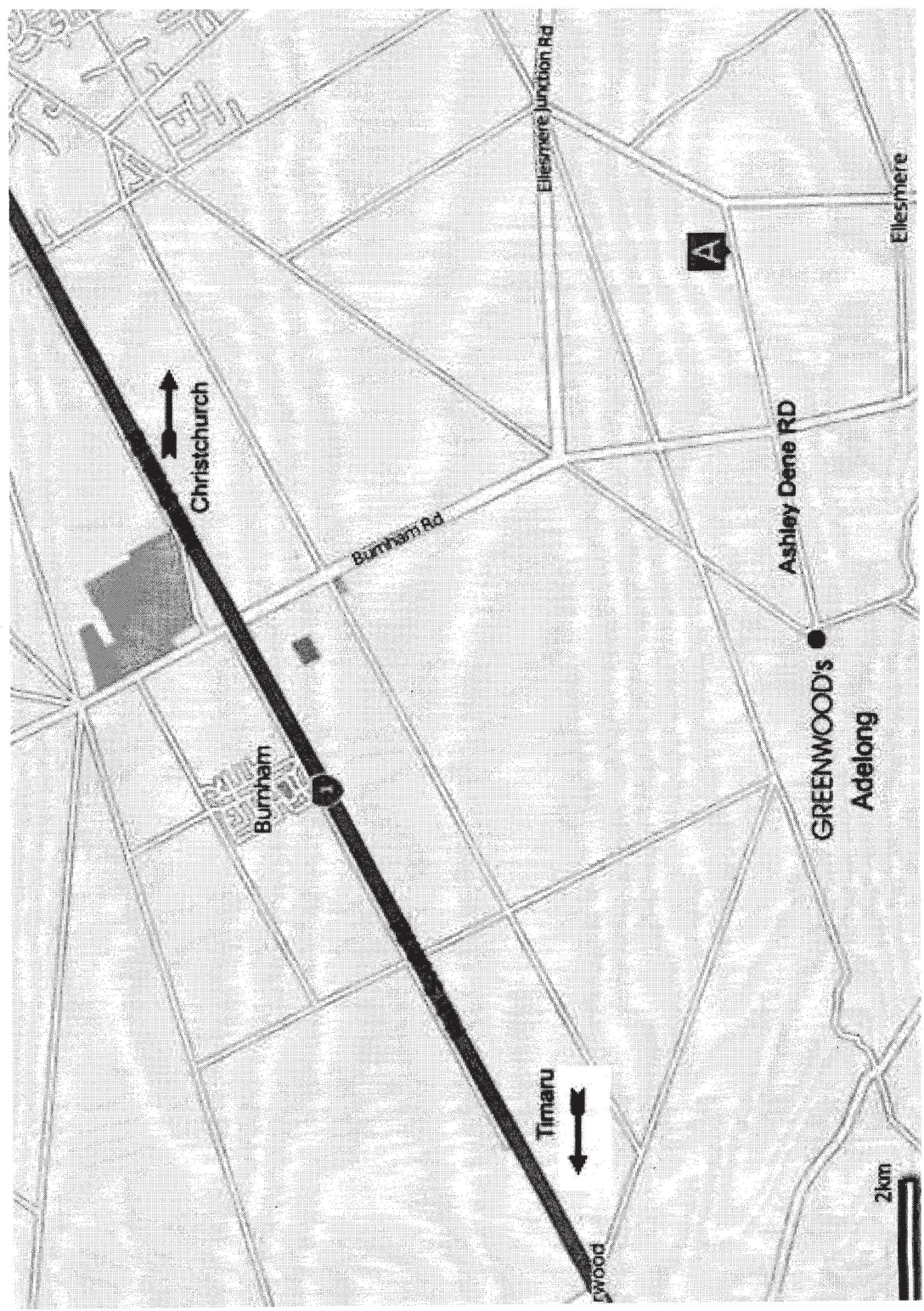
ADDRESS:

SIGNATURE OF BUYER OR AGENT:

DATE OF SALE:

TRANSFER STUD RAM: YES/NO

NO VERBAL INSTRUCTIONS CAN BE ACCEPTED



Christchurch

Burnham Rd

Ashley Dene RD

Burnham

GREENWOOD'S
Adelong

Timaru

Ellesmere Junction Rd

Ellesmere

2km

NOTES

NOTES

Vetlife

Animal Health Partners

Covering your animal health needs
from Banks Peninsula to Central Otago



03 325 4155
www.vetlife.co.nz

Vetlife
DUNSANDEL

Proud to be associated with Neville & Dianne



PGG Wrightson Genetics

**Specialists
in genetics
performance.**

PGG Wrightson Livestock are New Zealand's leading specialists in the sourcing and supply of quality stud and commercial livestock genetics.

If you are looking to take your business to the next level with a robust and specifically tailored genetics program then contact your local PGG Wrightson Livestock Genetics Representative.

For expertise and integrity you can depend on talk to us today.

***There's only one name you need to remember.
PGG Wrightson Genetics.***

John McKone
South Island Head
Auctioneer
0272299375

Grant Nordstrom
Livestock Manager
Canterbury
0274344064

Ryan Shannon
Livestock Genetics
Rep - Trainee
0275650979

Stu Uren
Livestock
Representative
0275910446

Bruce Orr
Genetics Advisor
0275922121

Freephone 0800 2466 5463 www.agonline.co.nz

Helping grow the country